

# Emerging ways to make your WAN more productive and flexible



As a business in today's competitive environment your network is critical to increasing productivity, supporting applications and connecting locations anywhere your needs take you. Businesses are considering ways to increase agility by making their WAN more productive and flexible.

AT&T SD-WAN Network Based combines the economics and flexibility of a hybrid WAN with the deployment speed and low maintenance of a cloud-based service, to provide a SD-WAN Solution. It includes policy-based network-wide application performance, visibility and control while dramatically simplifying the WAN by delivering virtualized services from the cloud to branch offices.

The introduction of Software Defined Networking (SDN) for cloud based deployments coupled with open architecture hardware a.k.a. universal CPE (uCPE) allows for complementing the core network using broadband connections. This approach allows business' to expand capacity along with providing network based policy and performance routing.

## Benefits

- Virtually global availability to meet your deployment reach and timeline
- uCPE integrates Virtual Network Functions and multiple access options to improve speed and TCO
- Provides ability to select network technologies on a site-by-site basis for maximum flexibility
- Single customer portal experience for greater visibility and agility

## Features

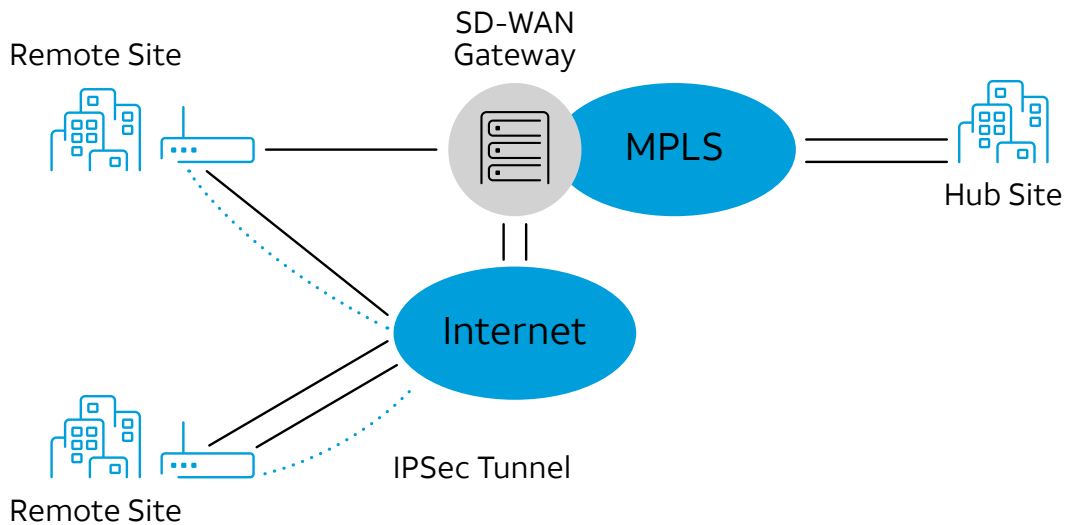
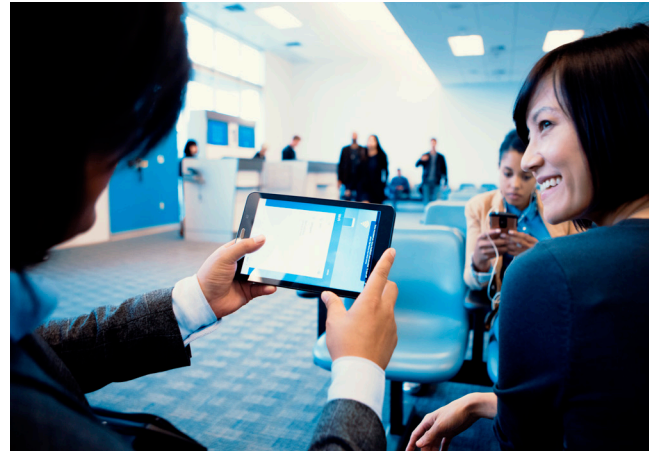
- Near Real-time dynamic routing
- Combine MPLS AT&T VPN service quality and lower cost Internet at each site for an optimal balance of performance, security and cost.
- Typical configuration uses dual links from MPLS and Internet provider
- Tunnels terminate in Gateway, not over MPLS/Edge
- Multi-function CPE functionality supported

This networked based SD-WAN solution provides dynamic hybrid networking. This approach can integrate multiple network connections using MPLS, IPsec, Broadband, and LTE. The uCPE can support multiple connections and the SD-WAN Virtual Network Function (VNF) optimizes the best path for network traffic based on policy routing, performance routing, or failover settings. This can be achieved by decoupling the network control from the traditional on-premises networking equipment.

This approach offers end-to-end visibility for your connected endpoints through the network and to the cloud. One that brings best-of-breed functions together with a full complement of connectivity options. And is delivered through a single, flexible interface that puts the control in customer's hands. So you can optimize your network for your business.

### Pick the access type best suited for your applications:

- MPLS via AT&T VPN service
- Broadband
- Ethernet
- 4G/LTE



For more information contact your AT&T representative or visit [att.com/vpn](http://att.com/vpn).