

# AccessMyLAN from AT&T

It's a reality of today's business world that workers need to be connected even when they are out of the office. AccessMyLAN from AT&T gives you the big business benefits of empowering your employees with mobile access without the cost or complexity of a big business solution.

## Security features and management

**Safety of your network is essential**, which is why AccessMyLAN was designed with security as a core feature.



With AccessMyLAN, you can apply your company's internet access controls to employee's mobile devices.



We provide a web-based administration interface, which gives you a real-time view of connected devices and the ability to change access privileges in real time on a per user basis.

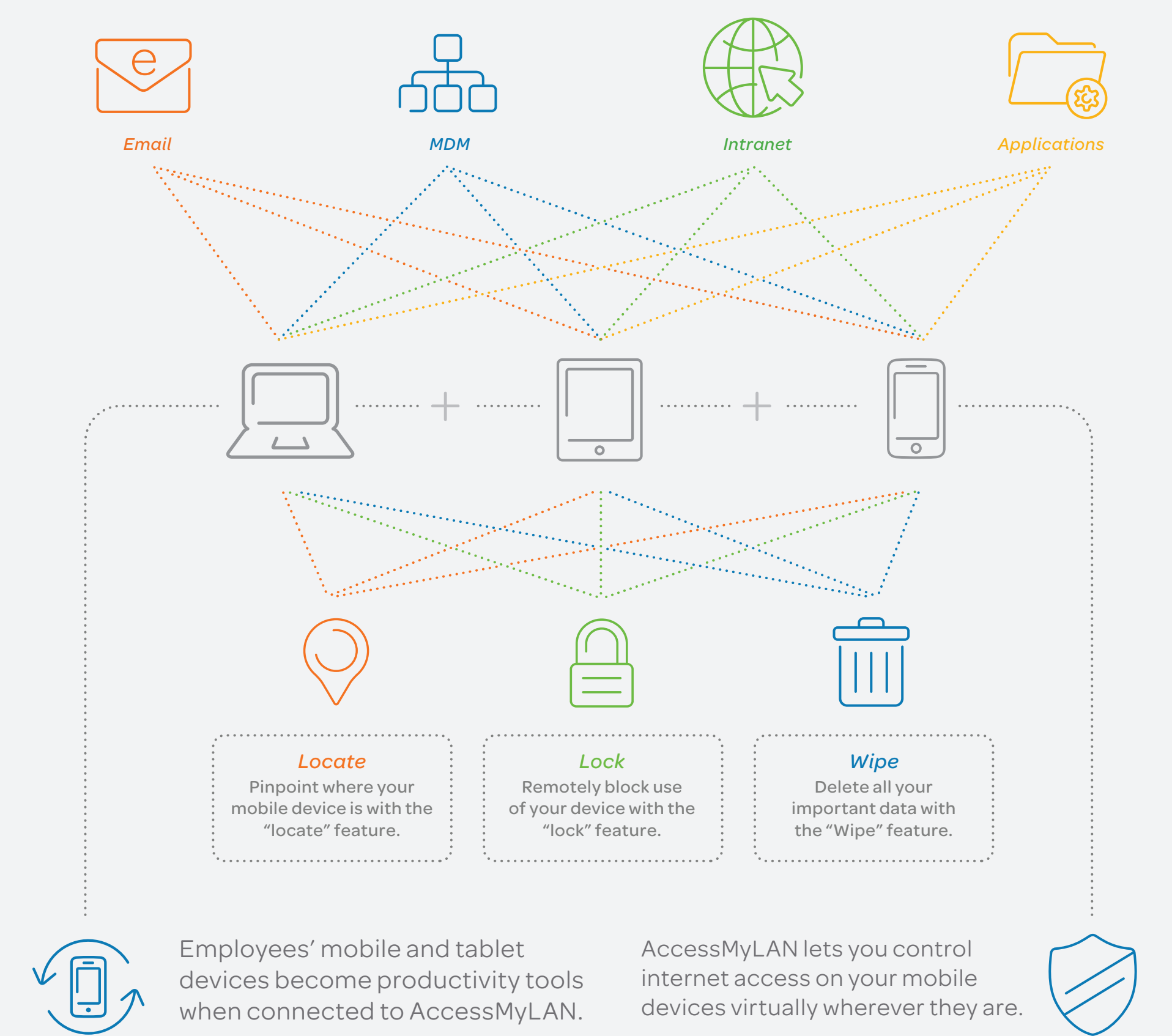


You can help control your mobile data usage costs, reducing "bill shock", and drive productivity by applying policies on what each employee can and can't do online.

## Product overview

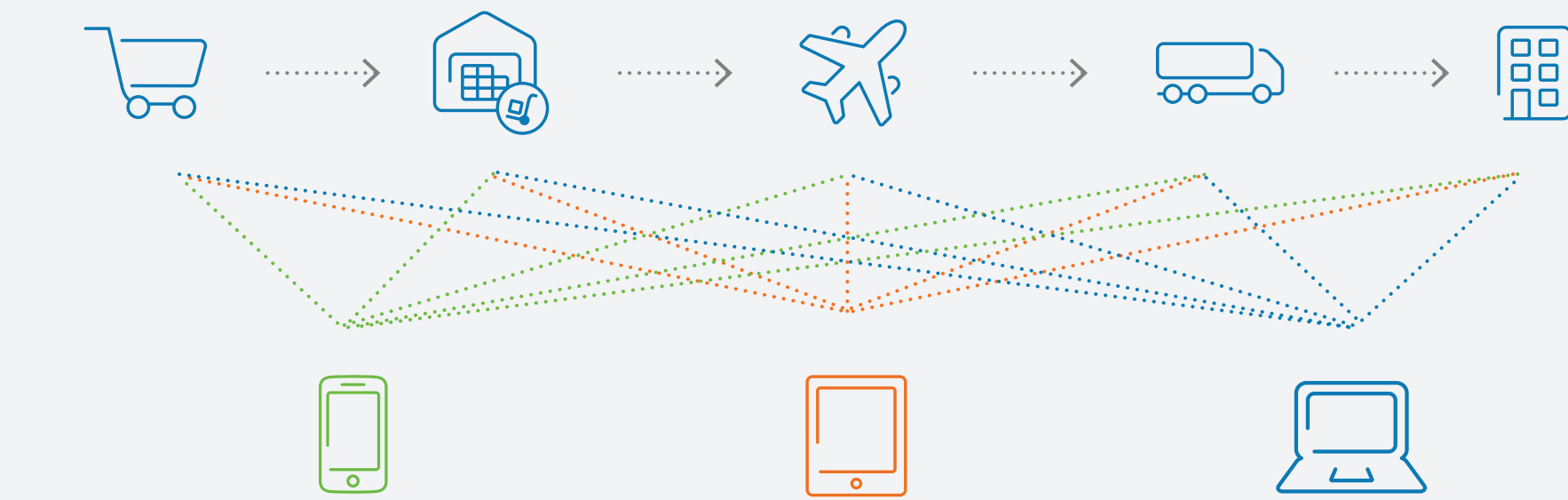
**AccessMyLAN** lets your employees access your network from virtually anywhere, giving them easy and highly secure access to their email, files, Intranet sites and business applications that reside behind your firewall. And, with the locate, lock and wipe feature, you can keep your devices and data more secure.

Access all your business applications virtually wherever and with almost any device



**75.8%** of U.S. Mobile subscribers own smartphones\*

(M2M) Use machine-to-machine connectivity to provide private static IP addresses in real time. Connect point-of-sale systems, for example, or tracking equipment in the supply chain – to speed up processes in remote places.



## Value and ease of use



Solution is easy to deploy and administer and does not require in depth technical knowledge to install.

No need for network reconfigurations or firewall rule changes.



Because this is a network-based service, you won't need to budget for equipment or personnel to implement.

And, we charge an affordable **\$9.99** per month,\*\* per end user with no minimum term.

\*Source: comScore, Inc.

\*\*Additional taxes, fees and other charges apply. Price is for AccessMyLAN only. Qualified data plan and compatible device required (priced separately).

Important Information: Additional hardware, software, services and/or network connection may be required. Availability, security, speed, timeliness and uninterrupted use of service are not guaranteed. Additional eligibility and other restrictions and terms apply. See 'AccessMyLAN from AT&T' product brief found at [att.com/abs-addtl-terms](http://att.com/abs-addtl-terms) for details. Offer subject to change.

