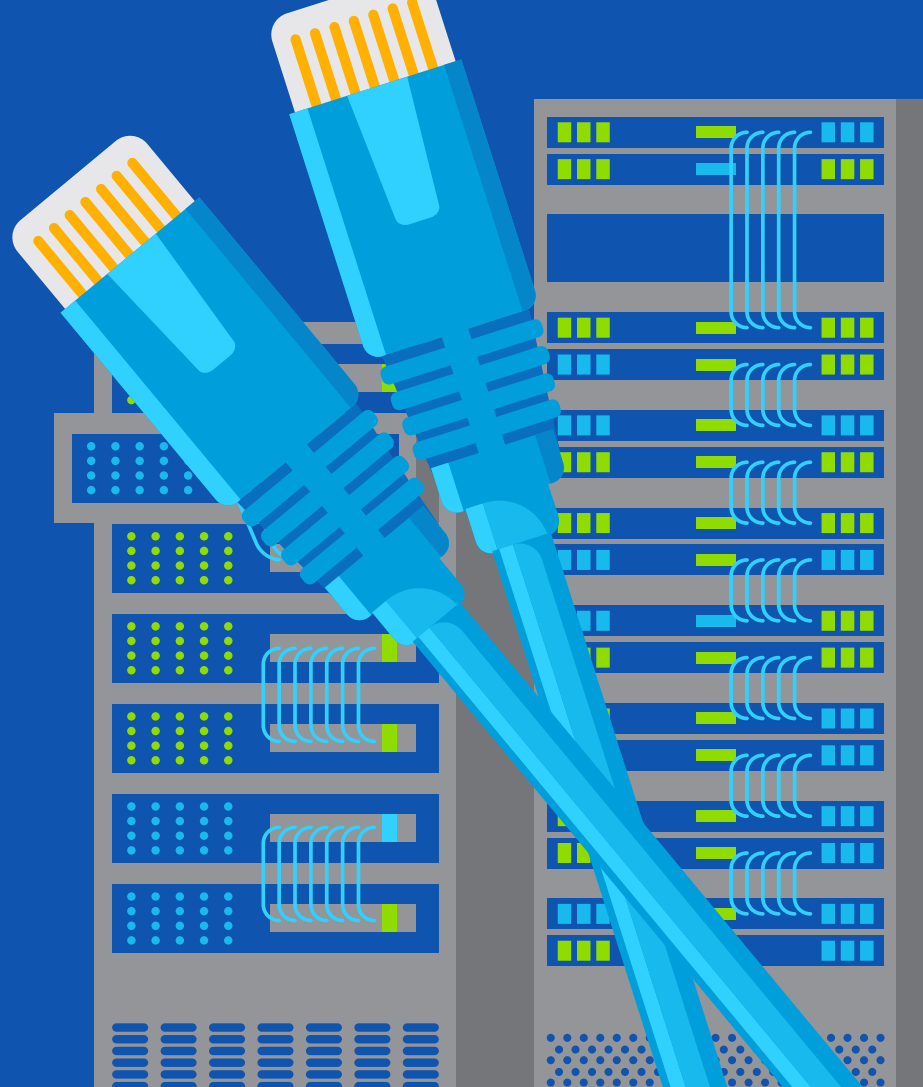


Turbocharge your business with AT&T Ethernet solutions

Get reliable, fast, and cost-effective fiber connectivity customized for your needs

AT&T Ethernet services connect 2 or more sites using our highly secure nationwide fiber network. Whether you need point-to-point, point-to-multipoint, or multipoint-to-multipoint connectivity, our award-winning turnkey Ethernet solutions can help you quickly link your corporate headquarters, data centers, clouds, and new locations nationwide. Think of Ethernet as the on-ramp to the Internet, your Internet Protocol Virtual Private Network (IP VPN), and other services, like Software-defined Wide Area Network (SD-WAN) or Voice over Internet Protocol (VoIP).



Why choose AT&T Ethernet?

- Easy to configure and use
- Flexible – connects 2 locations or hundreds of sites
- Use only what you need – cost effective use of bandwidth
- Managed option - 24-hour monitoring and management
- Reliable – quickly move data over an extensive fiber network
- Powerful – supports large volumes of data and bandwidth-heavy applications
- Internet - Use it for internet access too



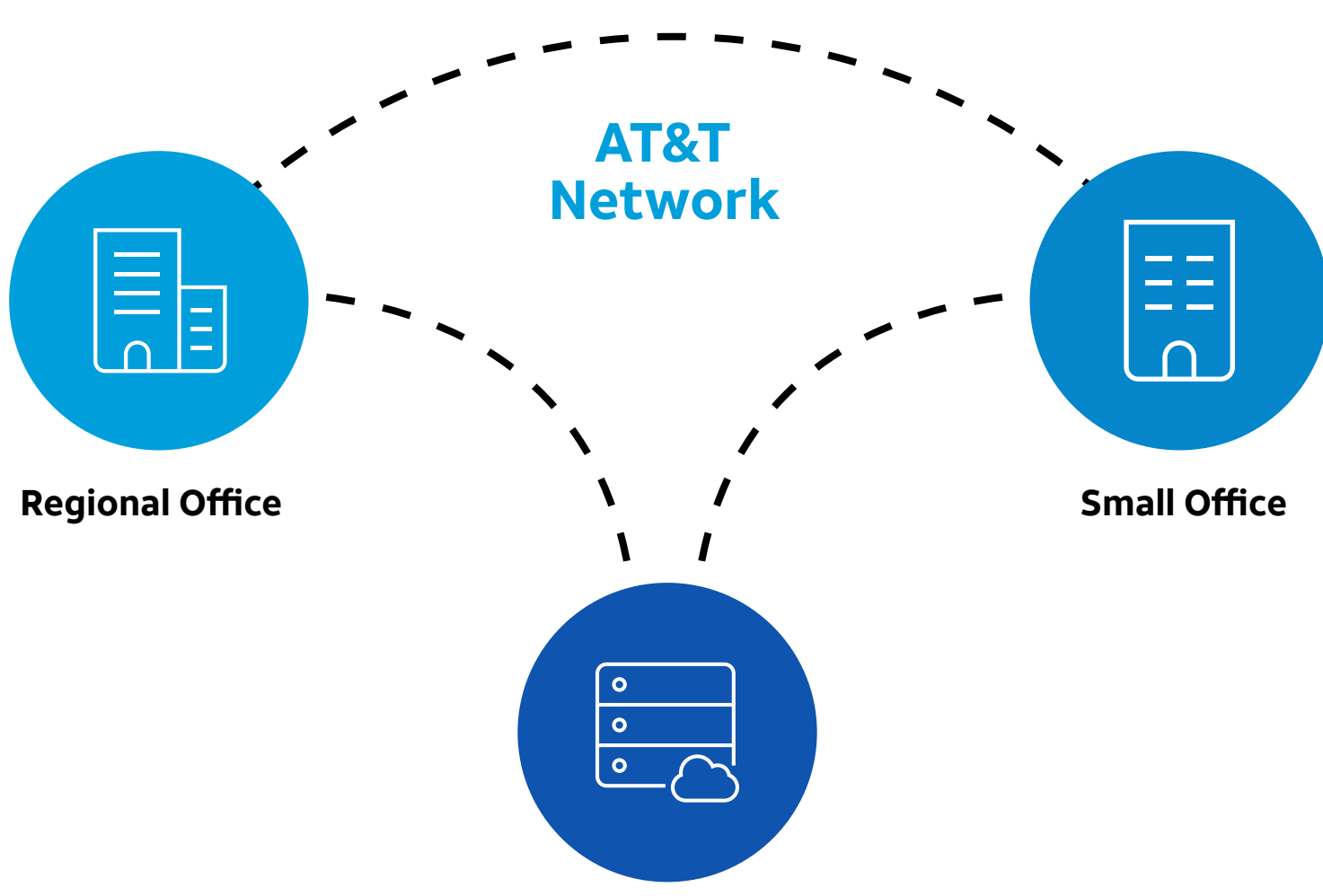
AT&T Fiber is available to nearly **15 million customer locations** in **90+ metro areas** in the U.S.



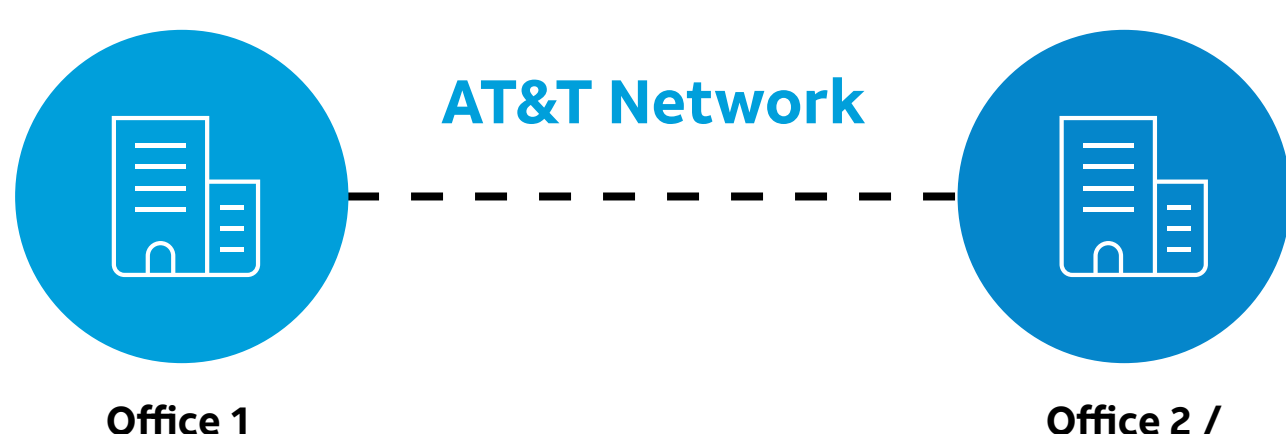
More than **650,000 U.S. business buildings** are lit with fiber from AT&T

Choose your ethernet solution:

Switched Ethernet – for low-cost connectivity with available self-service, on-demand ordering.



Dedicated Ethernet – for a fast, highly secure connection between 2 locations. Or a custom mix of dedicated and switched ethernet



We're here for you

Are you a business that wants to better support your workforce, customers, and locations? Contact us today. We have professionals who can demystify the technology for you and get you up and running with emerging technology and other solutions for your business.

AT&T Business is here to support businesses in a big way. Our **Tech Demystified series** can help you decide what products and services will work best for you.

Are you ready to handle more data, more bandwidth, more end-points, and bigger workloads? To learn more, visit [AT&T Business Ethernet Solutions](#) or contact your local sales representative.