

# Simplify your network complexity with Ethernet

## What is Ethernet?

### Multi-purpose network

Ethernet delivers connections to new and existing services for ease of integration with your emerging applications:

- A universal technology with a familiar look and feel making it easy to connect and run.
- Works the same in the LAN, MAN or WAN so it's familiar and easy to deploy.
- Supports bandwidth intensive applications like VoIP, Video, storage and data center consolidation.

### Network on Demand

Network on Demand customers can rapidly scale and provision network services with direct self-service access:

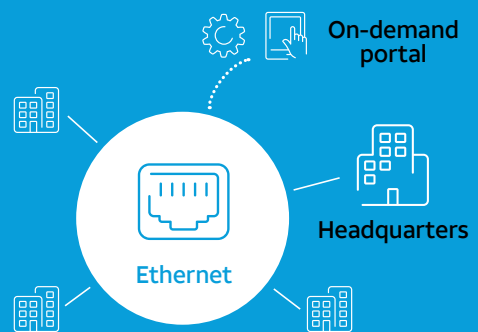
- Quickly improve traffic flow, reduce congestion as your business changes.
- Real time access to your network for faster service deployment.
- Frees up IT resources to focus on your core business. Remote locations

## Handle more data, more bandwidth, more end-points, and bigger workloads

### Ethernet options

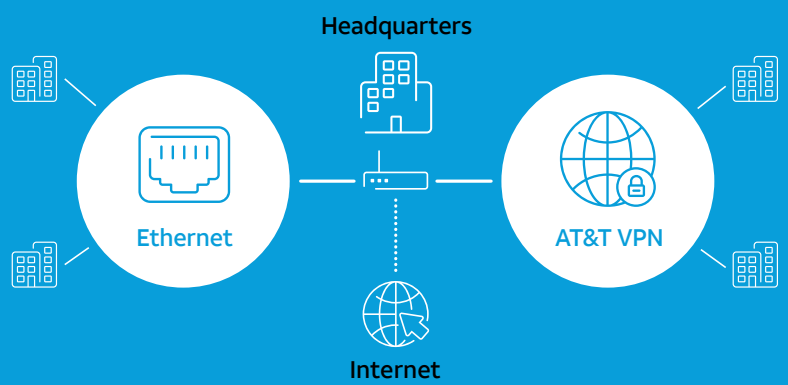
#### Switched Ethernet

- Connect locations together as if they were on one LAN.
- Fully meshed or hub and spoke design.



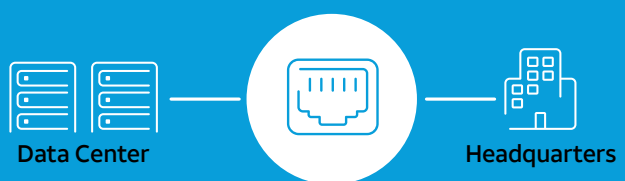
#### Hybrid

- Combination of Ethernet WAN and as access to other networks.
- Provides on-ramp to the Internet and VPN.



#### Dedicated Ethernet

- A two location connection that's fast and highly secure.
- High speed for constant exchange of information.



## Why Ethernet?

AT&T Ethernet can grow with you from megabits to gigabits, from 2 sites to hundreds of sites.

### Ethernet advantages

#### Speed



- WAN speeds with multiple Gigabits.
- Increase network capacity for heavy traffic loads.

#### Productivity



- On-demand network for faster response times.
- Simplify IT with a self-service portal.

#### Control



- Customer controlled routing and IP addressing.
- Manage and prioritize critical applications in-house.

For more information visit [att.com/Ethernet](http://att.com/Ethernet)