


CONNECTING TO LEARN

Solutions for schools to help close the homework gap and support remote learning for teachers.



A woman with dark curly hair, wearing glasses and a headset, is smiling while looking at a laptop. She has her hand resting on her chin. The background is blurred, showing indoor plants.

While the homework gap has existed for decades, the pandemic has brought national awareness to the problem. eLearning is not a temporary fix; it is an investment in the future of education. And connectivity is the new pen and paper.

We believe in the equality of education—and connection is at our core. Technology is critical for students to thrive and teachers to succeed. Schools need affordable options and also need capabilities enabled to support safety protocols like those in the Children’s Internet Protection Act (CIPA).

And teachers and students need access to the tools, resources and content that inspires and nourishes and transforms. That’s why we’ve created this offer for all qualified public and private schools, from K-12 to colleges and universities. From coast to coast, county to county, across the country.

Understanding the offer:

Together, we've learned and listened a lot this year. And we understand that schools want and need flexibility and affordable options. That's why we're providing options if you need a hotspot device as well as an option if you want to bring your own (BYOD). From 01/27/21 through 04/26/21, the following options are available to schools that migrate existing AT&T lines or activate new lines for students or teachers:

Moxee™ mobile hotspot on 12-month installment agreement and service option:

Schools can get a Moxee mobile hotspot device at no cost, after credits, when they purchase it on a 12-month installment agreement with one of the following unlimited wireless data plan and content filtering service options:

- AT&T Special DataConnect for Education plan and Enterprise Traffic Protector service for a combined discounted price of \$13/month, or
- AT&T Special DataConnect for Education plan and AccessMyLAN™ service for a combined discounted price of \$18/month.

Moxee mobile hotspot on 24-month installment agreement and service option:

Schools can get a Moxee mobile hotspot device at no cost, after credits, when they purchase it on a 24-month installment agreement with one of the following unlimited wireless data plan and content filtering service options:

- AT&T Special DataConnect for Education plan and Enterprise Traffic Protector service for a combined discounted price of \$12/month, or
- AT&T Special DataConnect for Education plan and AccessMyLAN™ service for a combined discounted price of \$17/month.

BYOD and service option:

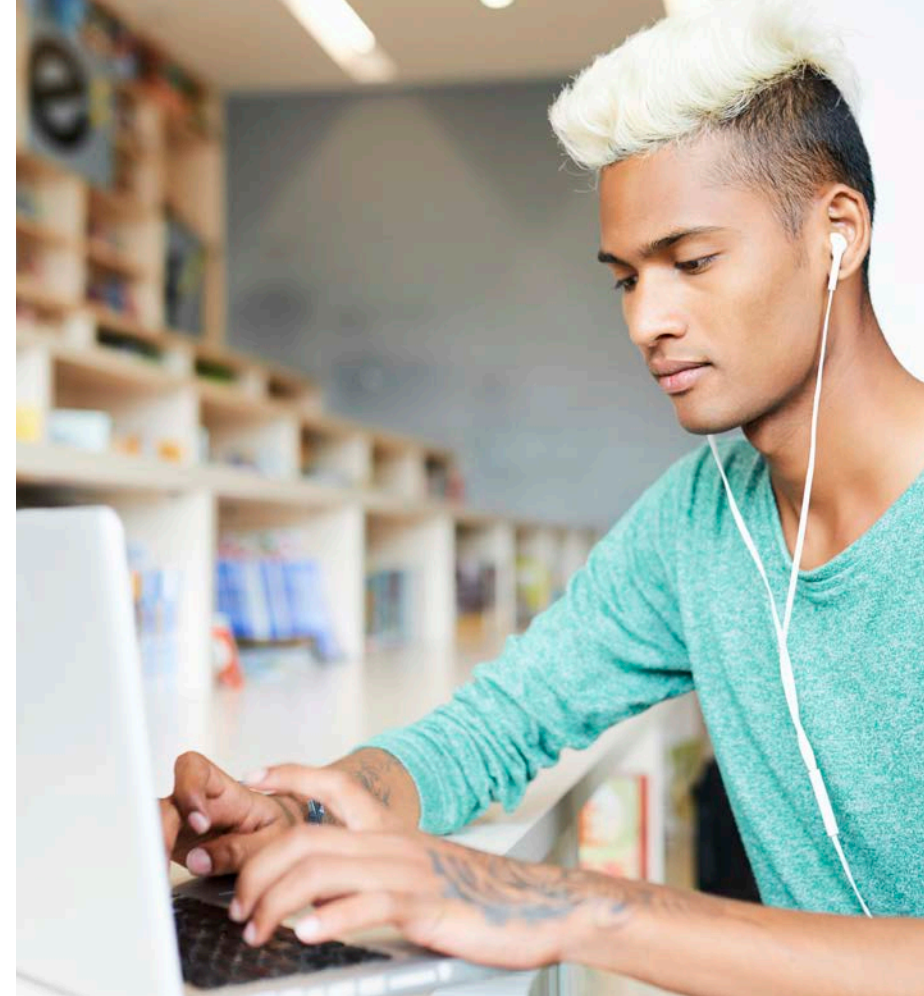
If migrating or activating 100 or more eligible lines, schools may bring their own devices when activating them with one of the following unlimited wireless data plan and content filtering service options:

- AT&T Special DataConnect for Education plan and Enterprise Traffic Protector service for a combined discounted price of \$12/month, or
- AT&T Special DataConnect for Education plan and AccessMyLAN™ service for a combined discounted price of \$17/month.

For the **AT&T Special DataConnect for Education plan**, after 50GB of data usage on a line in a bill cycle, AT&T may temporarily slow data speeds on that line if the network is busy.

- The great news is our network continues to perform well. We continuously monitor bandwidth usage with tools that analyze and correlate network statistics. This is standard practice for us, and you can stay informed at our AT&T COVID-19 website, under [Network](#).





Added flexibility & free for teachers:

We understand that student populations change throughout the year so schools that add at least one eligible line before 4/26/21 will also be able to activate additional lines with these services, and Moxee hotspots subject to availability, at the same price through 9/30/23. Understanding that for all lines activated under this offer, the discounted pricing ends on 9/30/23.

We also value and commend the commitment and dedication of teachers. They are truly the heart of our schools and classroom superheroes. This year has taught us that the potential to learn is limitless when teachers and students are connected.

- That's why we are providing schools the ability to get lines at no cost for their teachers. Based on the average class size of 1 teacher to 24 students, schools will get one free qualified line for a teacher—with the Special DataConnect for Education plan and either Enterprise Traffic Protector or AccessMyLAN—for every 24 lines for students that are migrated to or activated on the qualified services. These lines also have the option of taking advantage of the Moxee offer for a mobile hotspot device. Customer is responsible for taxes and fees.

Additional details about the AT&T Special DataConnect for Education plan:

While we all enjoy streaming, we understand that classroom time is about learning. That's why we've included video streaming controls in the data rate plans to help.

- For content we can identify as video, wireless streaming speed will be limited to Standard Definition quality (about 480p), similar to DVD.
- Rest assured, however, that interactive conferencing applications and services typically used for eLearning are not impacted by the video streaming controls.
- To learn more about the AT&T Special DataConnect for Education plan, [click here](#).

Highlights about Enterprise Traffic Protector:

- We understand that it is important for School Districts to implement appropriately their obligations under the Children's Internet Protection Act (CIPA).
- Enterprise Traffic Protector can be used by a School District as part of a plan to filter Internet sites, so that domains classified as inappropriate can be blocked by an acceptable use policy.
- If you'd like to learn more about Enterprise Traffic Protector for education, [click here](#).

Information about AccessMyLAN:

- AccessMyLAN is a mobile security and management service that can be used to support CIPA compliance for subscribed mobile devices.
- The service allows school administrators to manage the internet sites their students can access to help protect them from unsafe content and to block malicious sites, malware and hacking attempts.
- If you'd like to read more about the management and protection features of AccessMyLAN, [click here](#).

Supporting schools in summertime:

- Schools can also temporarily suspend service to each student line for up to 3 months in a rolling 12-month period.
- During the suspension, the monthly service charge for the data plan will be reduced to \$0.01/month, the service charge for Enterprise Traffic Protector or AccessMyLAN will be waived, and bill credits will be suspended.
- Installment agreement charges for equipment, if any, are not eligible for temporary suspension.
- Service suspension will not extend service discounts past 9/30/23.





- The discounted \$11 or \$12/per month prices for the wireless data plan and the discounted \$6 per month price for AccessMyLAN is achieved through bill credits that apply to all eligible lines until the earlier of 9/30/23 or when the service is terminated. Credits will be provided within 2-3 bill cycles.
- Customers will receive a free line of service for teachers, with the Special DataConnect for Education plan and Enterprise Traffic Protector or AccessMyLAN, for every 24 lines that are migrated or activated for students. Credits will be provided within 2-3 bill cycles and will be based on the number of lines migrated or activated at the end of the billing cycle. Customer will receive bill credits for free lines of service for teachers until the earlier of 9/30/23 or when the service is terminated. Customer is responsible for taxes and fees.
- The Moxee free device offer requires a qualified line and is \$85 on a 0% APR 12 or 24-month agreement. The device is at no cost after credits over up to 24 months. **Taxes due on full price.** Credits will start within 2 bills.
- If the data service is cancelled, the data plan and all credits will stop & the device balance will be due.
- Other fees, taxes, charges & restrictions apply to both student and teacher lines.
- For additional details regarding this offer, please read below.

Please read the important requirements:

- This offer is available for existing or new public and private K-12 schools, colleges and universities with a qualified wireless service agreement.
- During the promotional period (ending 4/26/21), qualifying customers must purchase at least one Moxee device on 24-mo. installment agreement or 12-mo. installment agreement with AT&T Special DataConnect for Education plan (data service is \$11/mo after credits if purchasing Moxee on 24-mo. installment agreement or \$12/mo. after credits if purchasing Moxee on 12-mo installment agreement) and order either AT&T Enterprise Traffic Protector (\$1/mo.) or AccessMyLAN service (\$6/mo. after credits) for that line. Qualifying customers with BYOD devices that activate 100 or more lines with the Special DataConnect for Education plan and an eligible content filtering service can also get the discounts (data service is \$11/mo. after credits; eligible content filtering services are either \$1/mo. or \$6/mo. after credits). Must maintain 100 or more lines for BYOD option or credits stop.

AT&T EDUCATION OFFER: Ends 4/26/21. Avail. only to qual. public and private K-12 schools, colleges and universities with qual. AT&T agmt for wireless svc and Enterprise Traffic Protector or AccessMyLAN and only for Corporate Responsibility User lines of svc. **New or migrated existing AT&T lines.** Moxee™ and discounted services option req's purchase of device on 12- or 24-month installment agreement. Bring your own device and discounted services option ("BYOD") req's purchase of eligible data-only device (tablet, iPad, laptop, aircard or hotspot device). All options require activation of device on Special DataConnect for Education plan (\$50.00/mo. before credits) and Enterprise Traffic Protector (\$1/mo.) or AccessMyLAN (\$9.99/mo. before credits). Customers that add a line w/ Special DataConnect for Education plan and Enterprise Traffic Protector or AccessMyLAN ("Qual. Line") during the promotion period will receive monthly credits until 9/30/23 for all Qual. Lines added during the promotion period and any additional Qual. Lines added between 4/27/21 and 9/30/23. **BYOD offer only available to customers that activate & maintain 100 or more Qual. Lines. Data Restrictions for AT&T Special DataConnect for Education plan: After 50GB of data usage on a line in a bill cycle, for the remainder of the bill cycle, AT&T may temporarily slow data speeds on that line during times of network congestion.** For content we can identify as video, wireless streaming speed will be limited to Standard Definition quality. Video speed is capped at Standard Definition, regardless of the network the device is on (for example, 4G LTE). Ability to stream, video resolution, and other data usage (including speed) are not guaranteed, may vary, and may be affected by other factors. For full plan details, see www.att.com/specdataconnedu. **Data Plan Credits:** Elig. lines will receive monthly bill credit of up to \$38/mo. until 9/30/23 for Special DataConnect for Education plan that will reduce the cost to \$12/mo. for eligible lines added or migrated with Moxee™ mobile hotspot on 12 mo. installment agreement and, after additional \$1/mo. bottom of bill credit, \$11/mo. for eligible lines added with BYOD or Moxee on 24 mo. installment agreement. Must be active & in good standing for 30 days. Credits start w/in 2 bill cycles. **Teacher Credits:** Customers will receive a line of service at no cost after credits on Special DataConnect for Education plan and Enterprise Traffic Protector or AccessMyLAN for every 24 lines that are migrated or activated for students until 9/30/23. Credits for each applicable teacher line will consist of the Data Plan Credits described above and an additional credit up to \$18/mo. to cover the remaining cost of the data plan and content filtering services. Credits will be provided within 2-3 bill cycles and will be based on the number of lines migrated or activated at the end of the billing cycle. **Tax on retail price due at sale. Fees apply. For all lines, credits suspended if data svc is suspended, and credits end if data svc is cancelled.** **Enterprise Traffic Protector:** Enterprise Traffic Protector price is \$1/mo. per line; no other discounts apply to Enterprise Traffic Protector. Separate agreement may be required to qualify. Enterprise Traffic Protector filtering applies to outbound Internet traffic directed to the Access Point Name (APN) provided. Customer may select either a shared APN (pre-set, non-customizable content filter) or private APN (customizable content filter). Additional provisioning interval may apply for private APN. Enterprise Traffic Protector can be used as part of a customer program to implement the Children's Internet Protection Act (CIPA) by identifying the content category of a requested Internet domain (example.com) to enable blocking under an acceptable use policy. Customer is responsible for determining whether use of Enterprise Traffic Protector (using either the shared or private APN option) satisfies customer CIPA requirements. For full details, see www.att.com/ETPeLearning. **AccessMyLAN:** Service includes (i) a multi-tenanted private AT&T APN or VPN configuration provided by AT&T and (ii) a server software agent, network-based remote access platform, and administrator web console provided by Asavie Technologies, Inc. (Asavie). Controls can be used by the administrator to restrict what and when resources may be accessed using a subscribed device. Service is subj. to the Asavie end user license agreement found at www.AccessMyLAN.com/channel/0985/eula.pdf including the following: In order to support provision of the service, as part of the AccessMyLAN service, Asavie and its affiliates may collect and process data including, without limitation, the following (which may include personal data): device number (MSISDN & IMEI), time and date of use of device when using mobile data or WiFi, amount of data sent and received, location of access, websites accessed and the type of website accessed. For managed devices (i.e., devices where AccessMyLAN is used as the mobile device manager), then AccessMyLAN may collect the names of applications installed on the device. The application name data will only be collected if customer enables the App Control feature in the AccessMyLAN management portal. Asavie and its affiliates (being any related entity, subsidiary or holding company of Asavie) is required to make use of data (which may include personal data) sent from end users' devices and computers in order to perform the AccessMyLAN service. Asavie and its affiliates may also make use of this data to generate anonymous statistical data for product development and marketing purposes. AT&T will have no access to this data. For full details, see www.att.com/aml. **Device Terms:** Buy Moxee mobile hotspot (\$85) on qualifying 0% APR Equipment Installment Plan (12-mo. at \$7.09/mo. or 24-mo. at \$3.55/mo.). Retail price is divided into monthly installments. **Tax on full retail price due at sale. Device Credits:** After all credits, get Moxee mobile hotspot device for free after credits over up to 24 months. Offer is available for each new or migrated line on eligible rate plan with Enterprise Traffic Protector or AccessMyLAN. Credits start w/in 2 bills. Applied monthly in equal amounts to device over entire agmt term & will not exceed \$85 per Moxee mobile hotspot device. **If you cancel data svc, will owe device balance of up to \$85 for Moxee.** Customers that add a Qual. Line during the promotion period may also take advantage of the device offer for Qual. Lines added before 9/30/23, subject to availability. **Return/Restocking Fees:** Return w/in 30 days. Restocking fee up to \$55 may apply. Line must be active & in good standing for 30 days to qualify. To get all credits, line must remain active, with eligible service, and on agmt for entire term. If you cancel service, upgrade or pay up/off agmt early your credits may cease. **Temporary Svc Suspensions:** For each line, Customer may request a temporary svc suspension of up to 3 months per rolling 12 month period. During suspension period, the \$11/mo. or \$12/mo. charge for data plan will be reduced to \$0.01/mo., data plan credits will be suspended, and the \$1/mo. charge for Enterprise Traffic Protector or the \$6/mo. charge for AccessMyLAN will be waived. Equipment charges are not eligible for suspension. Data plan and bottom of bill credits will not continue past 9/30/23 regardless of svc suspension. **Limits: Data and ETP or AML svcs may be used for student eLearning & educational purposes only.** Promotion may not be combinable with other offers/promotions. **Promotion, terms, & restr's subject to change & may be modified or terminated at any time without notice.**

GEN. WIRELESS SVC TERMS: Subject to Qualified Agmts. **Deposit:** may apply per line. Prices may vary by location. Credit approval, taxes, fees, overage, monthly, other charges, usage, coverage & other restr's apply. Early termination/cancellation fee may apply if customer purchases a subsidized device; see Qualified Agmt for details. See www.att.com/mobilityfees for fees & charges. AT&T svc is subject to AT&T network management policies. See www.att.com/broadbandinfo for details. Int'l and domestic off-net data may be at 2G speeds.

©2021 AT&T Intellectual Property. All rights reserved. AT&T, the Globe logo and other AT&T marks are trademarks and service marks of AT&T Intellectual Property. All other marks are the property of their respective owners.