

# Simple Wi-Fi service for your small business and guests



**People are always on the lookout for free Wi-Fi, and they'll find their way to businesses that offer it.**

## The world loves Wi-Fi

Whether laptops or tablets, smartphones or wearables, people want to connect while they wait. Complimentary Wi-Fi gives people faster connections, lower data costs and more enjoyable downtime.

## Ready in under 30 minutes

AT&T Wi-Fi Small Site is an easy and economical way to offer connectivity without the technical

headaches. Plug-and-play installation can have you up in running in less than 30 minutes, with public and private Wi-Fi networks covering up to 2,500 square feet.

## Highly secure Wi-Fi for your business and guests

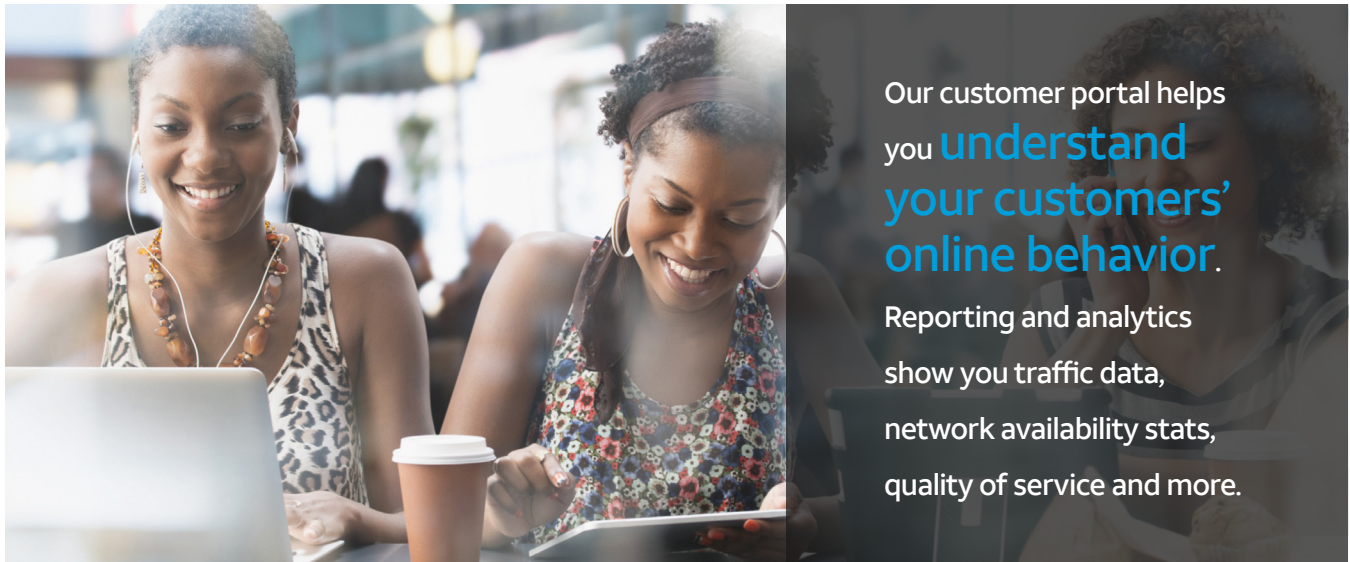
Public and private networks keep your business traffic separate and highly secure. Your customers have simple, high-speed access on the trusted AT&T network.

## Potential benefits

- Improved customer experience
- Highly secure and highly reliable connectivity
- Enhanced operations with business insights and reporting
- Ease of use with online account management
- Quick and easy installation

## Features

- Public and private Wi-Fi access
- 2,500 sq. feet of coverage
- Plug-and-play installation
- 24x7 technical support
- Customized network name and connection page
- URL filtering
- Network reporting
- Wireless back-up to guard against service interruptions



Our customer portal helps you **understand your customers' online behavior.**

Reporting and analytics show you traffic data, network availability stats, quality of service and more.

Your employees also have password-protected access to email and other business applications.

### Elevate your brand

With our standard package, you can brand your Wi-Fi connection page with your logo, create a customized message and upload your own images. Our cloud-based customer portal lets you manage your customers' Wi-Fi experience when it's most convenient for you.

### Full technical support

After installation, we continue to support your business with no-cost troubleshooting and online account management. And our toll-free help desk is always available for your customers, too.

### Gain business insight

Our customer portal helps you understand your customers' online behavior. Reporting and analytics show you traffic data, network availability stats, quality of service and more.

### Manage your own network

Save time and effort by accessing our customer portal for all your account management needs. You can use it to send us feedback, view reports and customize your Wi-Fi connection pages, network names and passwords.

### Experience the AT&T advantage

AT&T has over 100 years of experience bringing the latest technology to our customers. AT&T Wi-Fi Small Site combines top-shelf equipment with AT&T know-how. And if there are any issues, we handle customer care and troubleshooting for both you and your customers.

For more information, visit [att.com/wifi](http://att.com/wifi) or call 877-388-0590

Share this with  
your peers

