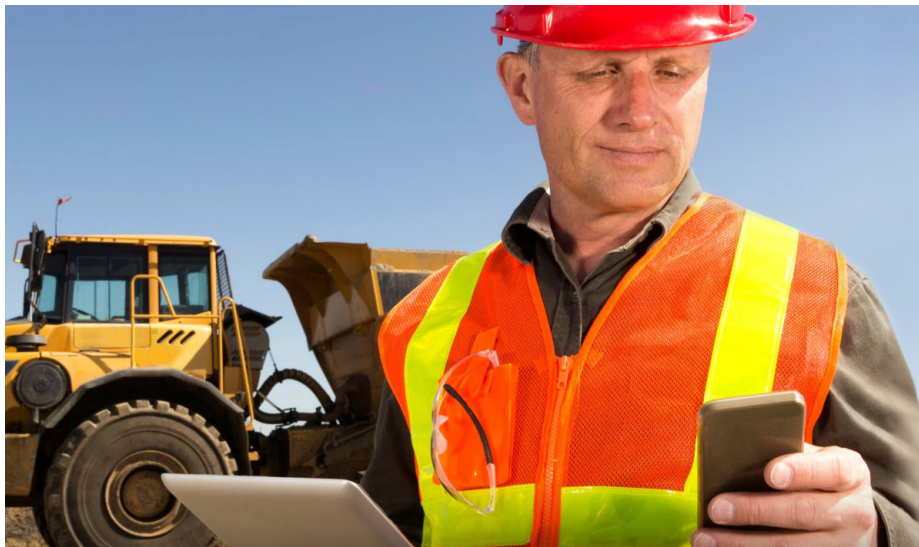


Monitor and control your mixed fleet of assets in a single view with AT&T Equipment and Machinery Solutions (EAMS)



Frost & Sullivan 2021 Company of the Year Award for the Global Cellular Internet of Things (IoT) Industry, Excellence in Best Practices.

Extend asset life and gain actionable insights with an Internet of Things (IoT) solution that enables you to monitor assets 24x7.

If you've made a big investment in heavy equipment and machinery, you want to protect your equipment and get the most out of your investments. Managing a mixed fleet of assets manually can be time consuming and cumbersome. Plus, you could miss out by not having valuable, actionable data that could help you improve operations. With safety and sustainability front of mind for many organizations, having real-time insights into your operations is imperative.

AT&T Equipment and Machinery Solutions (EAMS) enables you to easily monitor and track your mixed fleet of assets, so you'll have visibility into their statuses 24/7, plus get

real-time data about equipment performance. With more information right at your fingertips, you can make better decisions – meaning you can extend the useful life of assets, operate more sustainably, and get optimal value and return on your investments.

How it works

AT&T EAMS uses Internet of Things (IoT) technology to exchange data between the equipment being tracked and a cloud management platform. The equipment has telematics hardware that could be built-in by the original equipment manufacturer (OEM), or it could be an attached device. Either way, you

Features

- Track powered, occasionally powered, or unpowered assets
- Asset analytics and in-depth reporting
- User-friendly web portal and full-featured mobile app
- Log maintenance and perform safety inspections with mobile app
- Configurable, real-time alerts
- Global wireless connectivity options
- Power options including hardwired, battery and solar
- Rugged device options for harsh environments

Benefits

- More hours of uptime equals the opportunity for more revenue
- Helps extend asset life
- Increases visibility into operations
- Improves efficiency with a consolidated platform for managing data across your mixed fleet of assets
- Reduces operating costs by helping you proactively maintain assets

can track a single piece of equipment or a fleet of mixed equipment and machinery. Data is stored securely in the cloud where you can easily access it on demand in your portal and get meaningful, actionable insights. Plus, the portal makes it easy to set up and manage alerts and geofences.

Intuitive web portal and full-featured mobile app

Whether you access AT&T EAMS from the web, the mobile app, or both, one platform manages it all. With our single pane-of-glass web portal, you'll have access to reports and dashboards for asset location, equipment use and status and other data. You can create reports, view trends, and more:

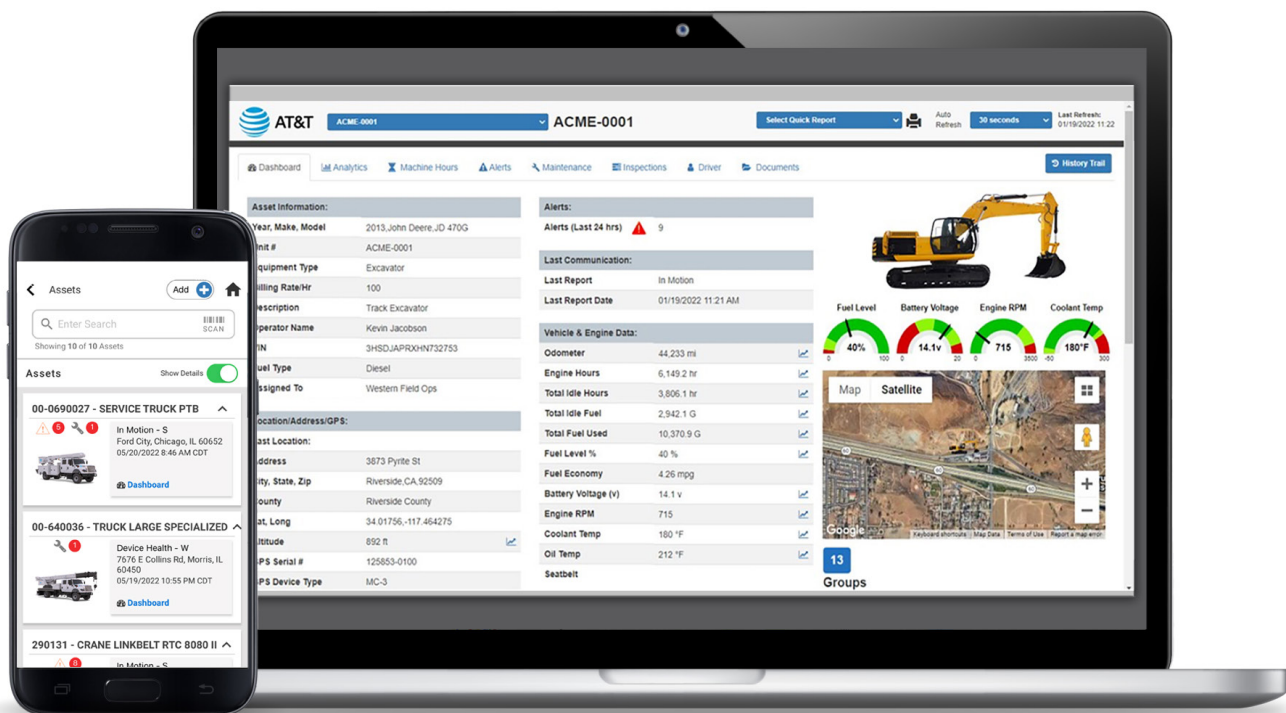
- Manage your connected devices
- Automate responses to problems before interruptions arise
- Access a wide range of historical data analytics
- Complete safety inspections from any connected device, including your smartphone
- API library enables you to integrate OEM heavy equipment telematics with your applications

Configurable, customizable alerts

Stay in the know about your assets with customizable alerts that let you know about unauthorized use, equipment health, and repair needs. Alerts are easy to configure in the EAMS web portal. Choose from pre-set alerts or customize your own based on a variety of sensor data such as location, duration, start/stop time, and hours of service (HOS).

What AT&T EAMS can do for you

- Monitor and track trucks, cranes, other valuable machinery
- Reduce equipment theft
- Remotely monitor health and usage
- Log hours, location, fuel consumption, and engine codes
- Get alerts on instances of unauthorized use
- Improve operational efficiency
- Enhance worker safety



Benefits for a wide range of industries

Here's a sample of some industries that can benefit and the light, medium, and heavy equipment that can be tracked. The options are limitless.

- **Agriculture:** Tractors, harvesters, trailers
- **Construction:** Bulldozers, cranes, generators, skid steers
- **Drilling and Mining:** Excavators, augers, mining vehicles
- **Trucking/Intermodal:** Forklifts, pallet jacks, container handlers

From the field to the office, AT&T EAMS give you better visibility and control over your powered, unpowered, or occasionally powered assets, wherever they are located.*

Equipment and machinery manufacturers, rental companies, and dealers: Track utilization trends, become more competitive, and increase value for your customers.

Owners and operators: Track and monitor use to improve utilization and avoid downtime. Get equipment health data and extend useful life by servicing equipment and preventing breakdowns. Track emissions data to operate more sustainably.

Dispatchers: Know the location and status of equipment and machinery at all times. Get alerts about unauthorized use.

Safety officers: Integrate with optional cameras for a first-hand look at how your equipment is used. Inspect assets, get safety alerts, and schedule reports for worker safety trainers and regulators.

AT&T Business is a leader in IoT connectivity

We've connected more than 100M devices as of 3Q22, including equipment from many heavy equipment manufacturers. Our catalog of IoT devices also supports many older and non-telematics enabled equipment.

Contact your AT&T Business representative or [visit us online](#) to learn how AT&T Equipment and Machinery Solutions can give you better visibility into your assets, provide actionable data, and help keep your workers safe.



Why AT&T

With experience across all industries, we bring a rich understanding of your business demands to deliver the right insights, guidance, and solutions for you. Our AT&T Equipment and Machinery Solutions are delivered by a team of experienced professionals dedicated to helping you make informed business decisions.

*AT&T EAMS is currently available in North America, with global availability planned.