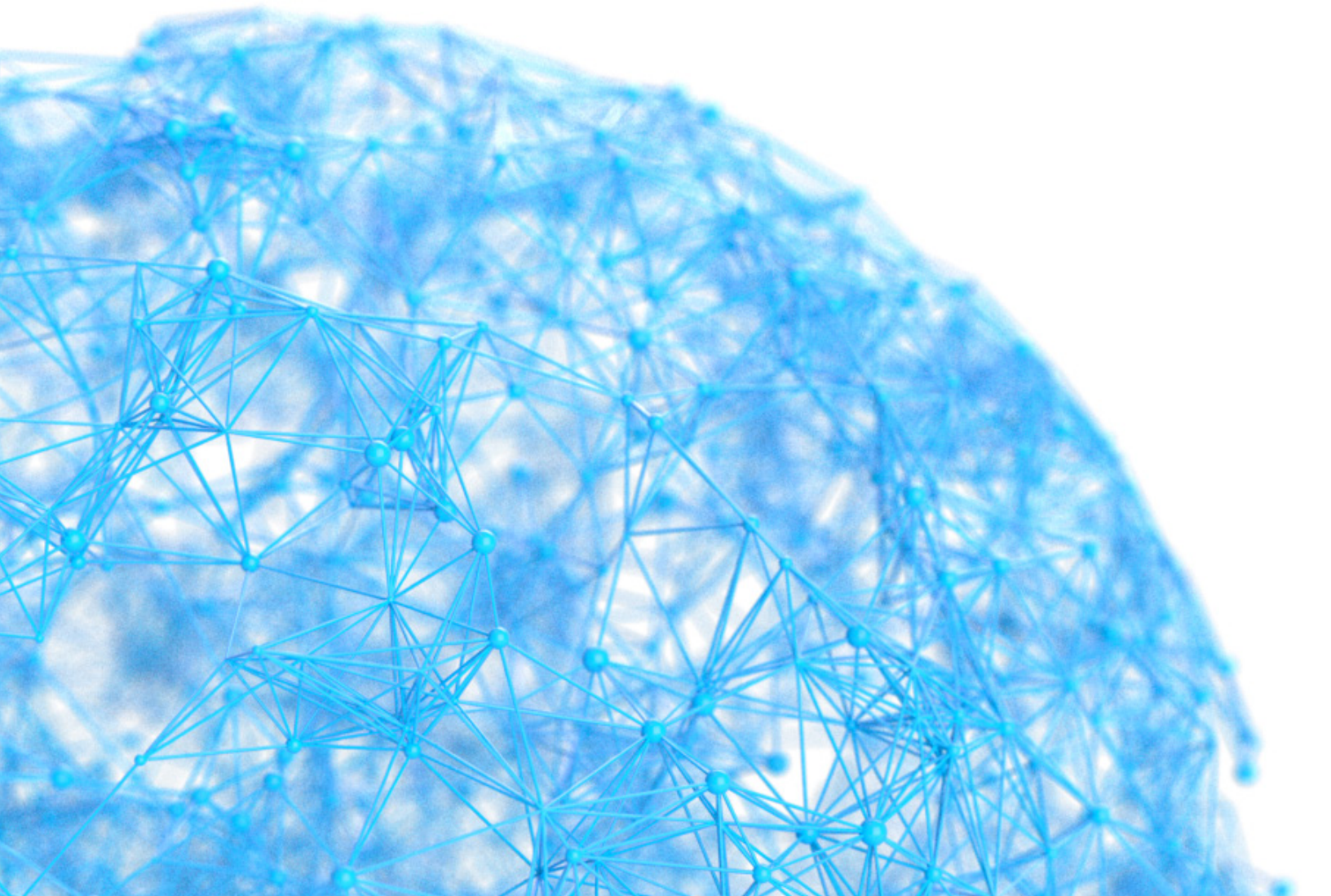


Global SIM Advanced

AT&T Connected Solutions

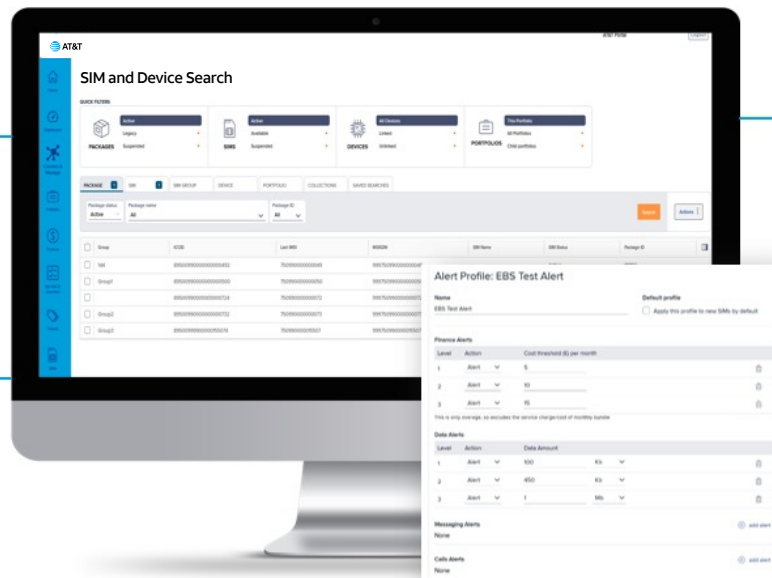


Global SIM Advanced (GSA)

Global SIM Advanced (GSA) is a multi-profile eSIM solution powered by the AT&T bootstrap IMSI. GSA comes with built-in automation rules enabling automatic switching between selected local networks that can provide flexible connectivity to optimize IoT operations.

All-in-one platform for the profile monitoring and insights

Orchestration rules to optimize connectivity at Customers device

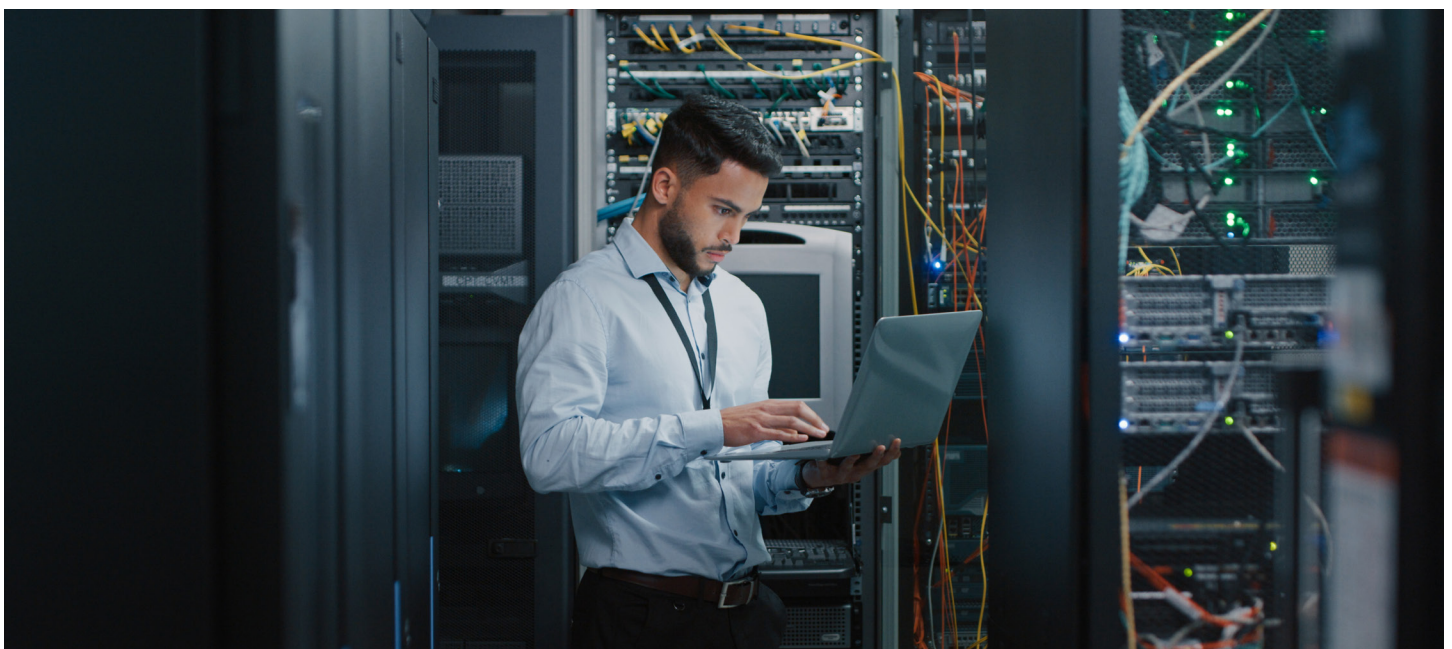


APIs for intergration into Customer systems and dashboards

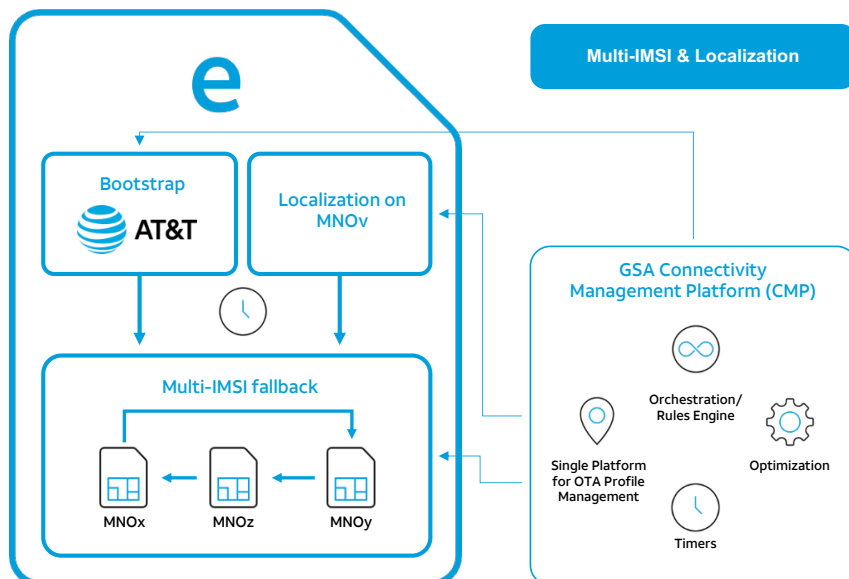
Lifecycle management of end points in one dashboard

All available cellular technologies supported

GSA platform is designed for multi-IMSI eSIM oversight and provides secure, and scalable IoT connectivity, making it an ideal choice for businesses looking to deploy and handle eSIM solutions globally. GSA platform is a centralized interface for enterprises to manage device connectivity, data usage, and troubleshoot issues from a single dashboard, while offering eSIM orchestration with advanced automation rules for operational efficiency.



- ✓ SIM Flexibility (Form Factor/Plastic/Embedded)
- ✓ Combine AT&T Bootstrap/Multi-IMSI Fallback/Localization with bi-directional switching (up to 10 Profiles) to maximize resiliency
- ✓ Dynamic on SIM or Over the Air (OTA) switching for IMSI profiles will adapt to network changes
- ✓ Combine SIM and Connectivity Management Platform (CMP) timers to select optimal profile (OTA SIM timers)
- ✓ Use CMP to continually optimize connectivity for device and application
- ✓ Deep & flexible mobile network operator integration options



GSA multi-IMSI eSIM comes with an AT&T profile and can store up to 9 additional network profiles, allowing devices to switch between different networks without the need for physical SIM card replacements.

GSA includes a catalog of value-added services to its customers, like device assessment, and a path to new eSIM standards as such standards start to deploy in the industry. These services will help business customers expand their IoT device capabilities to meet the evolving requirements of IoT use cases.



Global SIM Advanced benefits

- **Increased resiliency**
Advanced multi-IMSI eSIM delivers more network paths to the device.
 - **Single global SKU (Stock Keeping Unit)**
Simplify device deployment and management.
 - **Network optimization**
Automation rules to fasten connectivity decisions and maximize device uptime.
 - **Localization**
Orchestration to switch to approved local profile, offering performance options for high bandwidth, low latency uses cases.
 - **Getting ready for upcoming GSMA standards**
Full support for SGP.02 and path to SGP.32¹
 - **Device assessment**
Test and identify potential connectivity issues, anomalies, or restrictions in the service.
 - **Reporting, Analytics**
Powerful reporting engine for optimization and data analytics.
 - **Security and policy management**
Authentication, and authorization and technology integration.
 - **Simple Pricing**
Simplified pricing structure to ease the management help control costs.
- ¹Subject to technical support from partners

Example use cases across key industries

Manufacturing

An intelligent connectivity solution that enables monitoring and remote management of EV (Electric Vehicle) charger with ease and efficiency.

Utilities

From smart meters to grid monitoring, utilities can use IoT for near real-time data collection and tools to manage energy.

Healthcare

Wearable devices, remote patient monitoring, and telemedicine.

Video Streaming

High bandwidth video streaming can be useful for broadcasting events, the multi-IMSI eSIM allows the cameras to connect to multiple networks.

Why AT&T Business?

Choosing the right IoT solutions can be challenging. Evolving technologies continually redefine the digital landscape. This makes your choice of connectivity solutions key. That's why we make your business our top priority. We deliver the right fit of insights and guidance, so you feel confident in your ability to drive outcomes.

For more information, call your AT&T Business representative or visit us at:
<https://www.business.att.com/products/global-sim-advanced.html>

© 2025 AT&T Intellectual Property. All rights reserved. AT&T, the AT&T logo and all other AT&T marks contained herein are trademarks of AT&T intellectual property and/or AT&T affiliated companies. All other marks are the property of their respective owners.