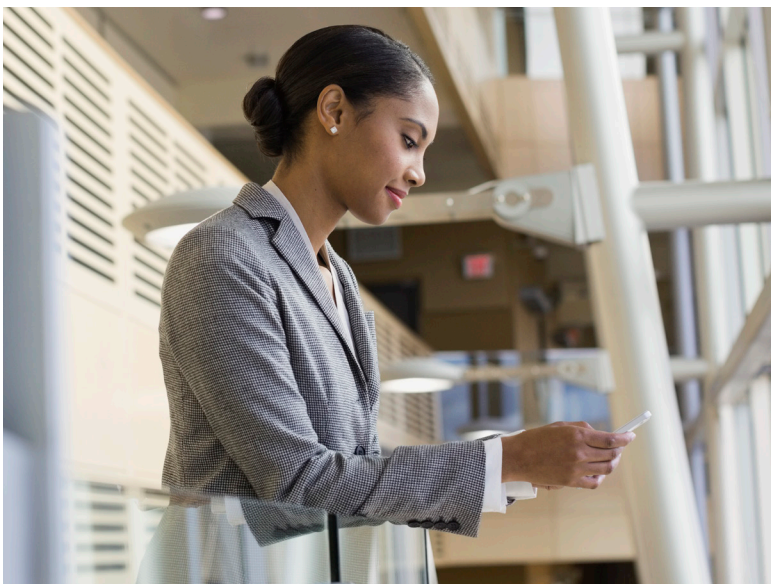


# Strengthen your signal: Boost in-building mobility cellular coverage



**AT&T Cell Booster Pro<sup>SM</sup> extends AT&T's cellular coverage for AT&T devices, up to 5 bars, in areas where you have dead zones or indoor coverage holes.**

Boost your cellular signal in your place of work. When you do, your teams can enjoy reliable connectivity to stay productive. Plus, you'll give customers and guests a better user experience.

In the evolving workplace, people — employees and guests — expect to use their wireless devices, whether working, shopping, or visiting. However, building structures and geography may cause problems for the strength and range of your cellular signal within your place of work. When that happens, it makes it harder for employees to stay productive and can make for a poor customer experience.

## Benefits

- Enhanced efficiency – Support your employees' or FirstNet personnel's productivity
- Smoother user experience – Improve the cellular wireless experience for your team, customers, and visitors
- Security controls for FirstNet users – Control access to your AT&T Cell Booster Pro<sup>SM</sup> for enhanced security
- Simple and convenient – Easy to self install and manage via mobile app and web portal. Or we offer professional installation for your convenience!
- Cost effective – A bottom-line-friendly investment for an elegant signal-boosting solution

## Features

- Each AT&T Cell Booster Pro<sup>SM</sup> is a small base station extending AT&T coverage
- Uses an Ethernet connection to the IP network for data transport/backhaul
- FirstNet configuration has closed mode option to manage approved user list
- Each device serves up to 64 simultaneous 4G LTE sessions, covering up to 15,000 sq. ft.
- Add up to maximum 3 devices per physical address (3 devices = 192 simultaneous sessions over 45,000 sq. ft.)

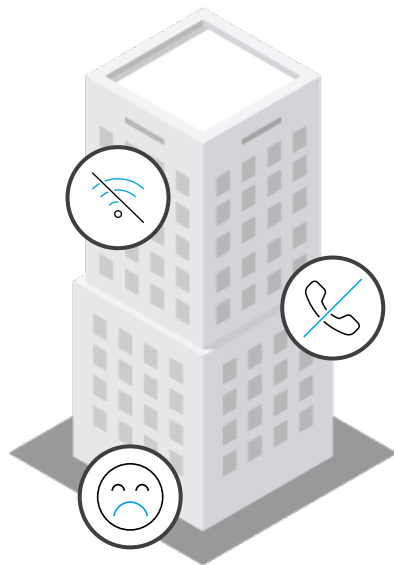
## What is AT&T Cell Booster Pro<sup>SM</sup>?

Employees and First Responders need to complete business-critical functions without worrying about missed or dropped calls or interrupted data downloads.




Now you can respond to these needs as well as those of customers and associates by using an AT&T Cell Booster Pro<sup>SM</sup> to improve cellular coverage for AT&T devices, in areas where you have dead zones or indoor coverage holes.

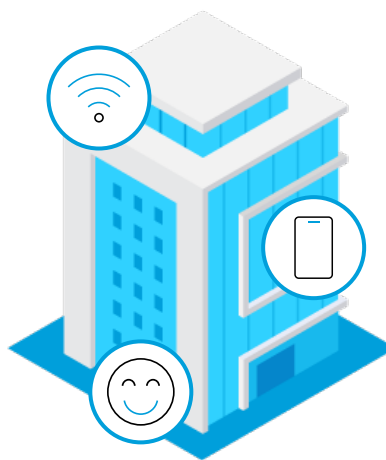
## Set up your own macro-site extender

The AT&T Cell Booster Pro<sup>SM</sup> is a low power, enterprise-grade “macro-site extender.” It extends AT&T cellular coverage within your building. With the AT&T Cell Booster app and portal you can install and manager your in-building coverage with straightforward simplicity.






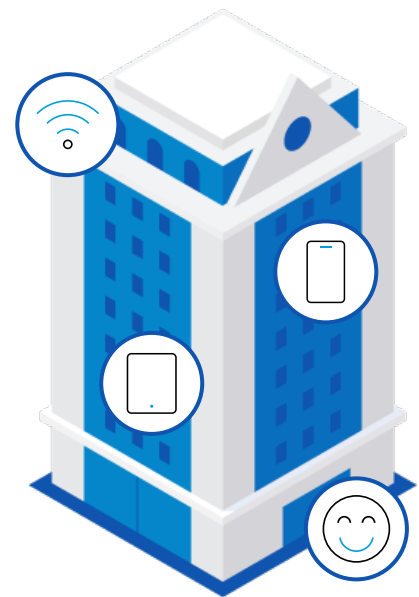
### Without Cell Booster Pro<sup>SM</sup>

-  Weak indoor signal areas and dead spots interrupt workflow
-  Employees unable to make calls or complete customer transactions on mobile devices
-  Weak indoor cellular connection creates irritated visitors and customers






### With 1 Cell Booster Pro<sup>SM</sup>

- Covers 15,000 sq. ft. and handles up to 64 simultaneous 4G LTE sessions
-  No weak indoor signal areas or dead spots for uninterrupted workflow
  -  Employees are able to make calls and more easily complete customer transactions on mobile devices
  -  Visitors and customers feel at ease and can more easily connect to cellular signal



### With 3 Cell Booster Pro<sup>SM</sup>

- Covers 45,000 sq. ft. and handles up to 192 simultaneous 4G LTE sessions
-  3 Cell Booster Pro devices cover 45,000 sq. ft. for larger businesses to create more productive workflow
  -  Employees are able to make calls and more easily complete customer transactions on mobile devices in larger areas
  -  Visitors and customers feel at ease and can more easily connect to cellular signals in larger areas

## Space saver that's a snap to set up

The AT&T Cell Booster Pro<sup>SM</sup> measures (in inches) 9.5 H x 9.5 W x 1.5 D (2.35 with backhaul module). It weighs only 3.5 lbs. Installation is easy. All you'll need is an available Ethernet port on a router or switch with sufficient available bandwidth to support the traffic that will be carried over the AT&T Cell Booster Pro<sup>SM</sup>. To get started:

- Scan QR codes to download the mobile app
- Register device in mobile app
- Unpack and inspect
- Install
- Confirm your broadband internet settings
- Connect power and Ethernet cables

If you have a question during setup or managing the device, our support team is happy to help and waiting for your call. **Don't want to add to your To-Do list? You can upgrade to on-site installation.**

## Welcome to your control center

Log in to the AT&T Cell Booster Pro<sup>SM</sup> app or portal and instantly have access to:

- Activate and deactivate your device
- Move the device to a new business location
- View product information, troubleshooting tips, and product manuals
- Manage and view business contact information, administrators, and locations

Plus, for FirstNet users, you can also manage the public or private access of your AT&T Cell Booster Pro<sup>SM</sup> via an "open" or "closed" mode. When the AT&T Cell Booster Pro<sup>SM</sup> mode is set to "open," everyone with an AT&T device can connect to the AT&T Cell Booster Pro<sup>SM</sup> and benefit from the improved in-building coverage. When set to "closed," only those users on an approved list of AT&T subscribers can access your AT&T Cell Booster Pro<sup>SM</sup>. That way you can better manage security and bandwidth.

## Pricing

AT&T Cell Booster Pro<sup>SM</sup> – (non-recurring charge) \$699\*/device  
Optional Installation – (non-recurring charge per single trip) \$700\*

\*Taxes and fees extra. See **Important Information** on the following page for additional terms.

### Important information

**General:** AT&T Cell Booster Pro as described in this product brief (the “Solution”) is available only to eligible Customers with a qualified AT&T agreement (“Qualified Agreement”). The Solution is subject to the Qualified Agreement and applicable Sales Information. Prices are subject to change. Solution requires: AT&T 4G LTE capable end user wireless device, AT&T wireless rate plan with online account management, Ethernet connection to a modem or router with fixed wireline broadband service (Minimum 25Mbps downstream/5Mbps upstream), ability to access a GPS signal using the supplied GPS antenna, and use in a location where existing AT&T cellular signal strength is weak.

All Cell Booster Pro equipment purchased in-store must be returned with your receipt to the original point of sale. All Cell Booster Pro equipment purchased on-line or over the phone must be returned to AT&T using provided return labels. Returned equipment must be like new without any visible damage. Please go to [www.att.com/wireless/return-policy](http://www.att.com/wireless/return-policy) for more details or to initiate a return. After 30 days from the original purchase date, AT&T will not accept the return of any equipment other than for processing warranty exchanges. Limited warranty – AT&T warrants to the original retail purchaser of an AT&T Cell Booster Pro device that if the product or any part proves defective in materials or workmanship during a period of one (1) year from the date of purchase, as evidenced by a register receipt or other valid proof of purchase, the defects will be repaired or replaced without charge for the parts or labor directly related to the defect. (See the AT&T Cell Booster Pro Service Guide for important Limitations and Exclusions [URL.]) 911 calls placed over your AT&T Cell Booster Pro will be routed to the emergency response center responsible for sending first responders (i.e. police, medical assistance or fire) to your location based on the address you provide in your online registration. Your AT&T Cell Booster or AT&T Cell Booster Pro needs electrical power and broadband Internet service to work. If the AT&T Cell Booster Pro loses electrical power or broadband Internet service, it will not be able to place any calls, including emergency calls to 911. You can only use your AT&T Cell Booster or AT&T Cell Booster Pro where AT&T is authorized to provide wireless service. Additionally, AT&T Cell Booster Pro operation may be limited to specific places within the AT&T network coverage area. Contact your AT&T representative for specific information on service availability. If AT&T is unable to verify that the physical location of the AT&T Cell Booster Pro within an AT&T authorized service area, the AT&T Cell Booster Pro will be disabled. Coverage is not available everywhere. To confirm AT&T Cell Booster Pro is available in your area and for more information, please visit [www.att.com/cellbooster](http://www.att.com/cellbooster).

Cell Booster Pro may not be available for purchase in all sales channels or in all areas, and may not be accessible at all times. Coverage is not available in all areas. AT&T wireless coverage maps are available at [www.wireless.att.com/coverageviewer](http://www.wireless.att.com/coverageviewer). Wireless service is subject to transmission limitations and terrain, system, capacity and other limitations. AT&T Cell Booster Pro may not be used as an RF source for a Distributed Antenna System. Availability, security, speed, delivery, timeliness, accuracy and reliability of information and services are not guaranteed by AT&T. Additional hardware, software, service and/or network connection may be required. Offer and pricing subject to change.

### Why AT&T

You need solutions that match your business needs, with industry- and workload-specific ideas conceived, iterated, and deployed at scale. With AT&T Business you get enterprise-grade connectivity that gives your business access to a robust device and services portfolio, built on the largest network in North America.\*\*

\*\* Based on comparison of carrier owned & operated networks. No AT&T on-net coverage in select countries, including Canada.

Discover how to boost your in-building mobility coverage with AT&T Cell Booster Pro<sup>SM</sup> at [www.att.com/cellboosterpro](http://www.att.com/cellboosterpro)