

AT&T Cloud Voice for Microsoft Teams

Equipment and Device Options for Enhanced
Maximize User Experience



What are the equipment and device options? | Summary of available options

Options:

1 Premises and data center equipment options:

- Analog and TDM* Gateways
- Session Border Controllers (SBCs)
- Survivable Branch Appliance (SBA)
- Survivable Cloud Core (SCC)

2 Phone and audio conferencing options:

- AudioCodes native Internet Protocol (IP) phones
- Poly native IP Phones & SIP* gateway phones
- Cisco and Yealink SIP Gateway phone series
- Microsoft SIP Gateway certified phones
- Speakerphones

3 Video conferencing options:

- AudioCodes Microsoft Teams Rooms (MTRs)
- Poly Native Video units

Key benefits:

1 Complement your AT&T Cloud Voice solution:

- Provides connectivity for analog solutions such as faxing, over-head paging, and alarm monitoring panels
- Supports Bring Your Own Carrier (BYOC) options to meet regulatory needs
- Provides resiliency options when your Teams environment is down

2 Flexible phone options:

- Provides feature support for different type of user needs
- Support options available for Equipment as a Service (EaaS) or Bring Your Own Device (BYOD)

3 Complete the experience with video

- Provides video devices for 1:1 conferencing, huddle rooms, and large conference rooms
- Bundles available for best quality and value

AT&T Cloud Voice | Services available for our equipment options

Services	Equipment as a Service (EaaS)*	New equipment + Remote Monitoring & Management (RMM) add-on	Existing equipment + Remote Monitoring & Management (RMM) add-on
Day 0: Pre-onboarding <ul style="list-style-type: none"> • Assessment • Requirements 	Included	Included	Add-on
Day 1: Implementation <ul style="list-style-type: none"> • Design • Configuration • Cutover 	Included	Included	Add-on
Day 2: Support <ul style="list-style-type: none"> • Change management • Software upgrade • Defective replacement • Monitoring & notification 	Included	Included	Included
Other add-on options <ul style="list-style-type: none"> • On-site installation • On-site sparing • End-to-end delivery 	Add-on	Add-on	Add-on

*EaaS includes Remote Monitoring and Management (RMM). Note that Survivable Cloud Core (SCC) only available in EaaS option.

Note: **EaaS is available only for AudioCodes phones.** Cisco, Yealink, and Poly are available as resale which includes support.

Ownership options for your equipment needs | Buying options

	Equipment as a Service (EaaS)*	New equipment + Remote Monitoring & Management (RMM) add-on	Existing equipment + Remote Monitoring & Management (RMM) add-on
Who owns the equipment?	AT&T	Customer	Customer
Who sold the equipment?	n/a	AT&T	n/a
What type of equipment is it?	OpEx	CapEx + OpEx	OpEx
Availability*	U.S.	U.S & MOW*	U.S. & MOW*

CapEx: Capital Expense

OpEx: Operational Expense

MOW: Most of World

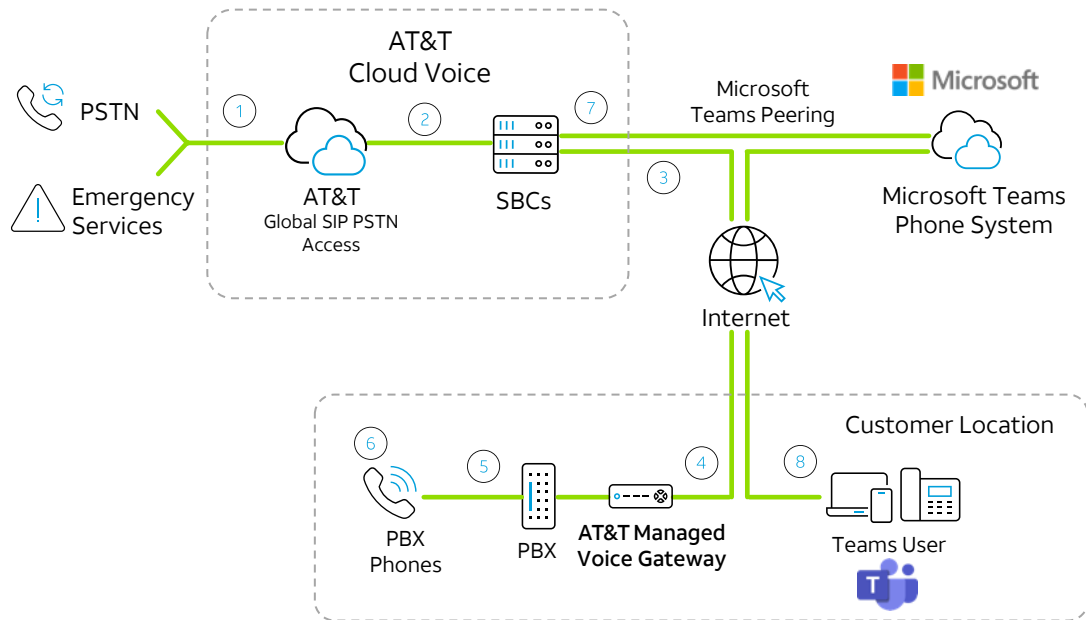
*Consult with your sales team regarding contract terms and specific country availability.

1. Premises and data center equipment options

AT&T Cloud Voice | Voice and analog gateways

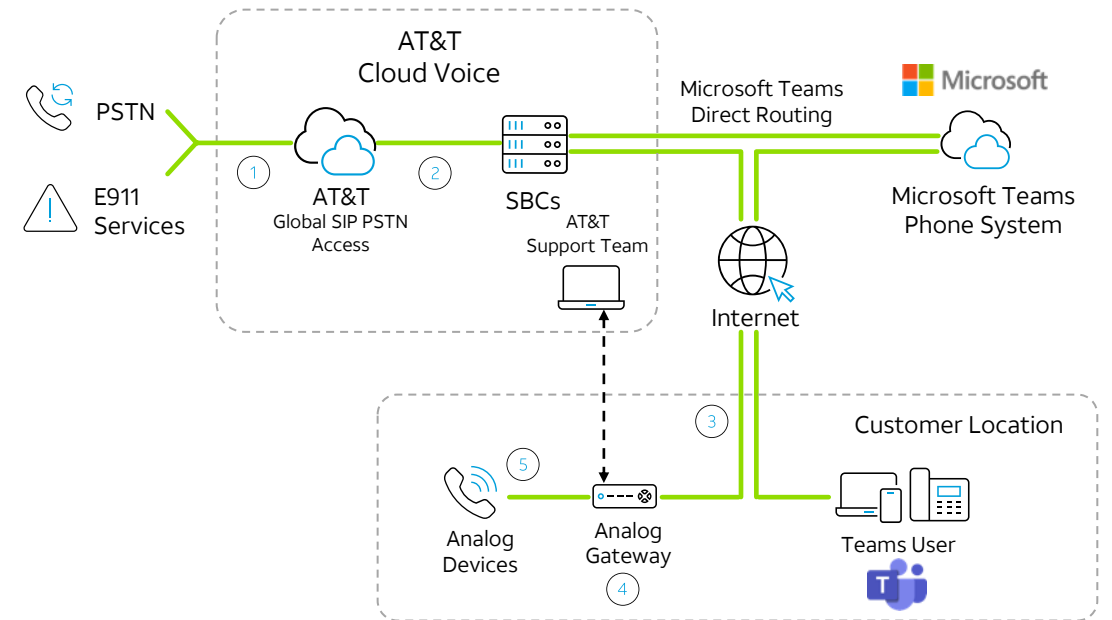
AT&T managed voice gateways

- Provides integration capabilities with existing PBX platforms
- AT&T can provide gateways as a service with monitoring, management with no need for upfront capital
- Customer can also purchase gateways and have AT&T provide management and monitoring



AT&T managed analog gateways

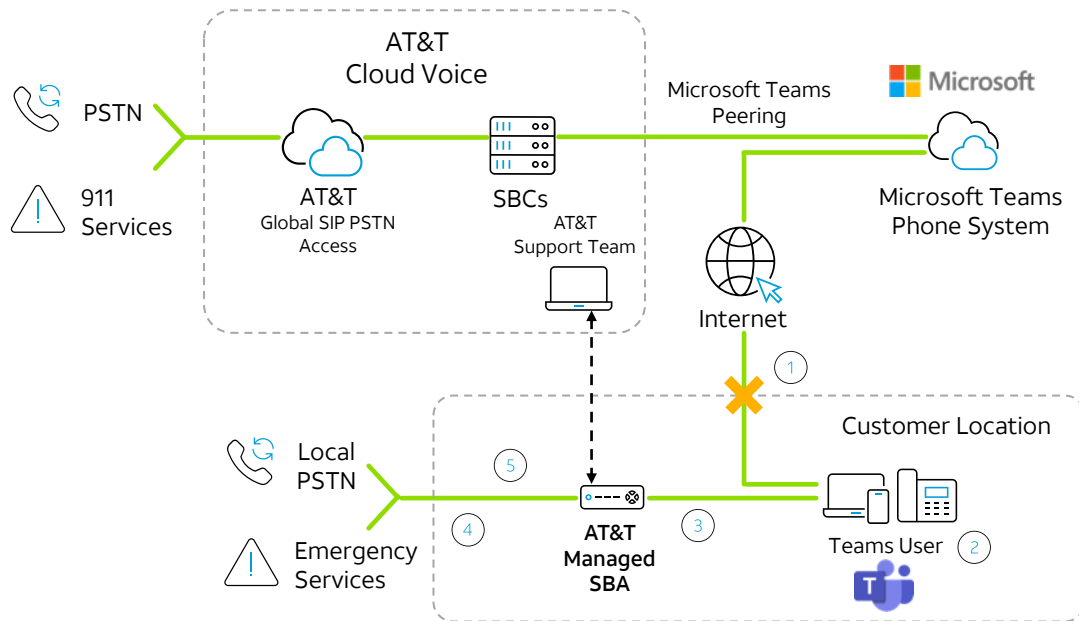
- Provides connectivity for analog solutions such as faxing, over-head paging, and alarm monitoring panels
- AT&T can provide analog ports as a service that includes hardware monitoring and management
- Customer can also purchase analog gateways and either self-manage or have AT&T monitor and manage



What are the equipment and device options? | Equipment for Teams resiliency

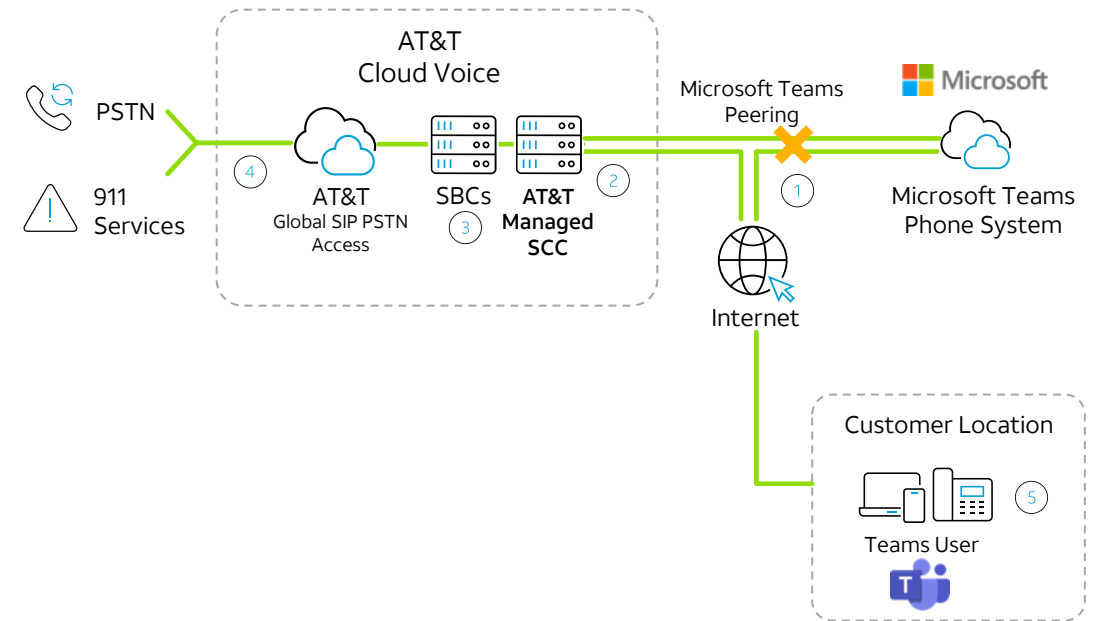
AT&T Survivable Branch Appliance (SBA)

- Mitigates loss of network access to Microsoft Teams
- Places at customer location and signals to local PSTN
- Registers Team users to local SBA and facilitates call set up
- SBAs can be provided as a service or customer can purchase equipment. AT&T provides monitoring and management for both options



AT&T Survivable Cloud Core (SCC)

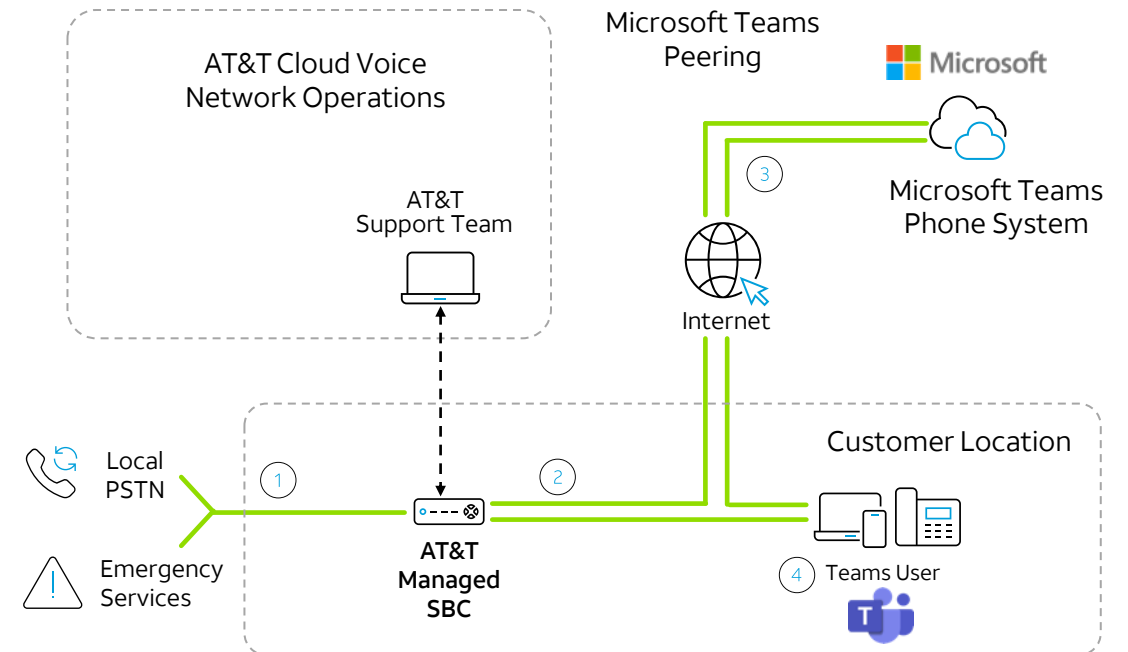
- Mitigates loss of network access to Microsoft Teams
- Provides Team user resiliency delivered from AT&T Cloud
- Registers Team users to cloud SCC and facilitates call set up
- SCC is provided as a service and includes AT&T monitoring and management. SCC is provided from the AT&T Cloud Voice data centers



What are the equipment and device options? | Session Border Controller (SBC)

Managed customer premises SBC

- Enables you to establish direct PSTN access at your premises
- Extends the AT&T Cloud Voice services into countries that require local PSTN access
- Provides SBC hardware that can support multiple SIP session capacity options
- Provides flexible purchase options
 - Can be purchased by SIP session as Equipment as a Service offer that includes the hardware and Remote Monitoring and Management (RMM)
 - Can be purchased as an appliance. We provide the SBC, SIP session licenses, and Remote Monitoring and Management (RMM)



2. Phone device options

Team phones options | Native versus Microsoft-certified phones

Your decision point: Native Microsoft Teams phones OR
Microsoft SIP gateway certified phones?

Native Teams phones

- Suitable for workers who require the full set of Teams features, such as:
 - Knowledge workers
 - Executives
 - Receptionist
 - Executive Assistants
 - Contact Center agents
- Native phones register directly to Microsoft Teams phone system
- To review list of features, see [Teams Phone features – Microsoft Teams | Microsoft Learn](#)

Microsoft SIP gateway certified phones

- Preserve your investments in SIP devices
- Provides simple and basic capabilities
- Requires registration via SIP Gateway into the Microsoft Teams Phone System
- No support for Teams Dynamic E911
- No support for survivable solution options like Survivable Branch Application (SBA) or Survivable Cloud Core (SCC)
- To review list of features, see [Plan SIP Gateway - Microsoft Teams | Microsoft Learn](#)

What are our Teams phone options? | Native Teams phones available

Options:

AudioCodes

- C470HD
- C455HD
- C455HD with expansion module
- C435HD
- RX15 Speakerphone

HP/Poly

- CCX 600
- CCX 500/505
- CCX 400
- CCX 350
- Trio C60 conferencing phone

Key benefits:

Complement your AT&T Cloud Voice solution:

- Full touch and buttons
- Full touch expansion unit support
- High-resolution LCD
- Easy navigation with back and menu
- Device management
- Dual-registration capability, also known as App Switching. Register simultaneously to Teams and an SIP server
- Group paging to other Poly phones or select overhead paging speaker systems

C470HD

Full-touch, feature-rich, executive high-end business phone for Microsoft Teams



Executive



Admin



Office employee

Feature

- Hands free ✓
- USB headset support ✓
- HD voice quality ✓
- Touch screen ✓
- Bluetooth/Wi-Fi ✓
- MSFT Teams Certified ✓
- PoE (Power Over Ethernet) ✓
- Better Together (Bluetooth based) ✓
- Advanced features – Call Park, Delegate ✓
- Wall Mountable ✓

*Microsoft features are available based on your license

Team phones options | AudioCodes native phones



Easy to sanitize

Small footprint with a big high-quality screen

Large most-used feature keys are fixed on the lower part of the home screen for max ergonomic usage

Big acoustic-chamber to deliver wide-frequency, clear sound

C455HD

High-end business phone with a large color touch screen for a seamless Microsoft Teams experience

Team phones options | AudioCodes native phones



Executive



Office employee

Feature

- Hands free ✓
- USB headset support ✓
- HD voice quality ✓
- Touch screen ✓
- Bluetooth/Wi-Fi ✓
- MSFT Teams Certified ✓
- PoE (Power Over Ethernet) ✓
- Better Together (Bluetooth based) ✓
- Advanced features – Call Park, Delegate ✓
- Wall Mountable ✓

*Microsoft features are available based on your license



High-resolution screen

Large keys

Large keys

Small footprint

C455HD with Expansion Module

High-end business phone with a large color touch screen for a seamless Microsoft Teams experience and an expansion module

Team phones options | AudioCodes native phones



Admin

Feature

- Hands free ✓
- USB headset support ✓
- HD voice quality ✓
- Touch screen ✓
- Bluetooth/Wi-Fi ✓
- MSFT Teams Certified ✓
- PoE (Power Over Ethernet) ✓
- Better Together (Bluetooth based) ✓
- Advanced features – Call Park, Delegate ✓
- Wall Mountable ✓

*Microsoft features are available based on your license



C435HD

A native Microsoft Teams entry-level or common area phone



Office employee



Common area users

Feature

- Hands free
- USB headset support
- HD voice quality
- Touch screen
- Bluetooth/Wi-Fi
- MSFT Teams Certified
- PoE (Power Over Ethernet)
- Better Together (Bluetooth based)
- Advanced features – Call Park, Delegate
- Wall Mountable

*Microsoft features are available based on your license

Team phones options | AudioCodes native phones



RX15 Speakerphone

Exceptional sound quality for personal offices and meeting rooms



Team phones options | AudioCodes speakerphone



Great for establishing ad-hoc meetings in small places

6-element microphone array

Ideal for hybrid work – no need to wear headset all day

Easy-to use, streamlined design

Excellent audio quality

HP/Poly | Microsoft-certified IP Teams native phones available

Ideal for

Managers and executives who want a larger screen



CCX 600

- 7-inch multi-touch LCD display
- Poly HD Voice, Acoustic Fence and NoiseBlockAI technologies
- 2 x 10/100/1000 (GigE), 2 USB ports (type A and type C), integrated Bluetooth and Wi-Fi
- Your choice of handset model or no handset model for use with headset
- Optional EagleEye Mini camera kit

Ideal for

Knowledge workers



CCX 500/505

- 5-inch multi-touch LCD display
- Poly HD Voice, Acoustic Fence and NoiseBlockAI technologies
- 2 x 10/100/1000 (GigE), 2 USB ports (type A and type C), integrated Bluetooth technology
- Your choice of handset model or no handset model for use with headset
- Easy to install anywhere: Wi-Fi included (CCX 505)

Ideal for

Lobbies and common area users



CCX 400

- Poly HD Voice, Acoustic Fence and NoiseBlockAI technologies
- 2 x 10/100/1000 (GigE), 1 x type A USB port
- Your choice of handset model or no handset model for use with headset
- Optional mount kit is available for wall mounting use cases

Ideal for

Retail, warehouse and manufacturing workers or common area phones



CCX 350

- Poly HD Voice with Acoustic Clarity technologies
- Poly Acoustic Fence and NoiseBlockAI technologies
- Traditional dial pad experience
- Full-duplex speakerphone operation and echo cancellation

AT&T Cloud Voice | HP Poly headsets & speakerphone families

Recommend for Teams users who prefer a headset over a hard phone



Voyager Wireless Bluetooth headsets

- Crystal-clear sound wherever you are
- Wearing-style options
- Perfect for hybrid work
- Mobile first with office options



Blackwire Wired headsets

- Easy use: plug & play
- Never worry about battery life
- Reliable, clear calls always
- Hybrid and office work



Sync Speakerphone

- Turn any call into a conference call instantly
- Audio alternative to headsets
- High-level sound quality
- Hybrid and office work



Savi DECT™ wireless headsets

- Longer roaming range for true wireless freedom
- Multiple wearing options
- 3-way connectivity (Office series)
- Hybrid and office solutions



EncorePro Contact Center wired headsets

- Always hear and be heard clearly
- Extremely durable for most intensive contact center use
- Lightweight for all-day use

Team phones options | Cisco, Poly, and Yealink Microsoft-certified SIP gateway phones

Leverage your existing SIP IP phones

Compatible SIP phones



Cisco IP phones with MPP firmware
(6821, 6901, 7800 series, 8800 series)



Polycom SIP phones (V VX series
100, 200, 300, 400, 500, 600 etc.)



Yealink (T20 series, T30 series,
T40 series, T50 series)



AudioCodes 400 HD series

Currently, the SIP Gateway service supports specific phone models, including:

- Cisco IP phones with MPP (Multiplatform Phones) firmware (6821, 7800 series, 8800 series)
- Poly V VX series (100, 200, 300, 400, 500, 600)
- AudioCodes 400 HD series
- Yealink (T20 series, T30 series, T40 series, T50 series)

2. Video conferencing options

AT&T Cloud Voice | Video conferencing equipment options

Options:

Video conferencing options:

- Microsoft Teams Room (MTR) – AudioCodes
 - RX-PAD
 - RXV200
 - RX-Panel
 - New content camera
 - Bundles
 - Standalone
 - Room controller
- HP/Poly
 - Poly Studio X30 & R30 (small)
 - Poly Studio Small Room Package
 - Poly Studio (medium)
 - Poly Studio X50 (medium)
 - Poly Medium Room Kit
 - Poly Studio X70 (large)
 - Poly G7500 (large)
 - Poly Studio Large Room Kit

Key benefits:

Video conferencing benefits:

- Meet the demands for hybrid workspace
- Enable equal and easy collaboration for participants
- Options from basic audio to full video
- Enable individuals, huddle/small rooms, and conference rooms
- Devices for Windows or Android operating systems
- Control over video and audio devices from single control pad

AT&T Cloud Voice | AudioCodes video conferencing equipment options

Are you ready for the new AudioCodes devices for Microsoft Teams Rooms?

RX-PAD



MTR for Android
Room Controller

RXV200



MTR for Android
Room Compute

RX-Panel



MTR for Android
Room Panel

New content
camera



Content camera
based on
RXVCam10

AT&T Cloud Voice | AudioCodes controllers for video and audio

RX-PAD Meeting Room Controller



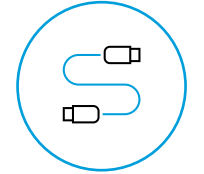
Status LED



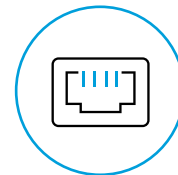
High-resolution 8-inch touch LCD



Human sensor



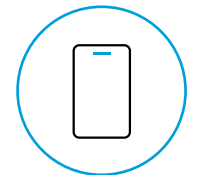
Cable Compartment



PoE or power enabled



Dual brand Wi-Fi and Bluetooth support



Android 12



Special touch buttons – Home, Back, and camera controls

AT&T Cloud Voice | AudioCodes controllers for video and audio

RX-PANEL Meeting Room Panel



- High-resolution 8-inch touch LCD
- Prominent status LED
- Wall mount option (regular wall and glass)
- PoE of DC power enabled
- Dual-band Wi-Fi and Bluetooth support
- Special touch buttons - Home and Back
- Android 12

AT&T Cloud Voice | AudioCodes controllers for video and audio

RXV200 – Android MTR Compute Unit



Support multiple cameras, any type of audio, and advanced AI with the help of a powerful Android compute unit suited to every room configuration.

Controls media inputs.

How many camera inputs are there?	2 X 4K simultaneous camera inputs
Do you support content cameras?	1 content camera input (USB based)
How many HDMI outputs are available?	2 X HDMI1.4 output to external screens
What type of HDMI inputs are available?	HDMI 2.0 Ingest (including audio)
Which device interfaces are available?	Proximity join and casting via Bluetooth
Which type of Wi-Fi is supported?	Dual-band Wi-Fi
Which USB port types are available?	2 X USB-C and 2 USBA for audio peripherals
Which versions of Android are supported?	Android 10 (Android 13 in H2/2023)
What type of chipset is offered?	Latest chipset from Qualcomm for video/conf applications

AT&T Cloud Voice | AudioCodes cameras

RXVCAM10-CC (Content Camera)



RXVCAM10-CC

Perfect for collaborating with a traditional analog whiteboard in Microsoft Teams meetings

- RXVCam10 camera
- Matte black mount unit
- 10m USB cable



AT&T Cloud Voice | AudioCodes for video and audio

RXV200 Bundles – MTR for Android

RX-PAD



Meeting Room Controller



RX-PAD



Meeting Room Compute

RXV200-B20
Small room up to 10 users



RXV Cam50M

4K camera
10x digital zoom, auto framing
100° field of view



RX15

2.5m pick-up

RXV200-B40
Large room up to 16 users



RXV Cam50M

4K camera
10x digital zoom, auto framing
100° field of view



RX40

6m pickup with 2 satellite mics

AT&T Cloud Voice | AudioCodes for video and audio conferencing device bundles

AudioCodes RXV100 Windows MTR Bundles



RXVcam50M

Fits medium to large rooms

- RXV100 for Microsoft Teams
- RXVcam50L
- RX40 Audio Bar as an audio peripheral with 2 satellite microphones



RXV100-B20 Bundle

Fits small to midsize rooms

- RXV100 for Microsoft Teams
- RXVcam50M



RXV100-B05 Bundle

Fits small to midsize rooms

- RXV100 for Microsoft Teams
- Hub only
- Suitable for audio-only rooms



RXV100 Room Experience Hub

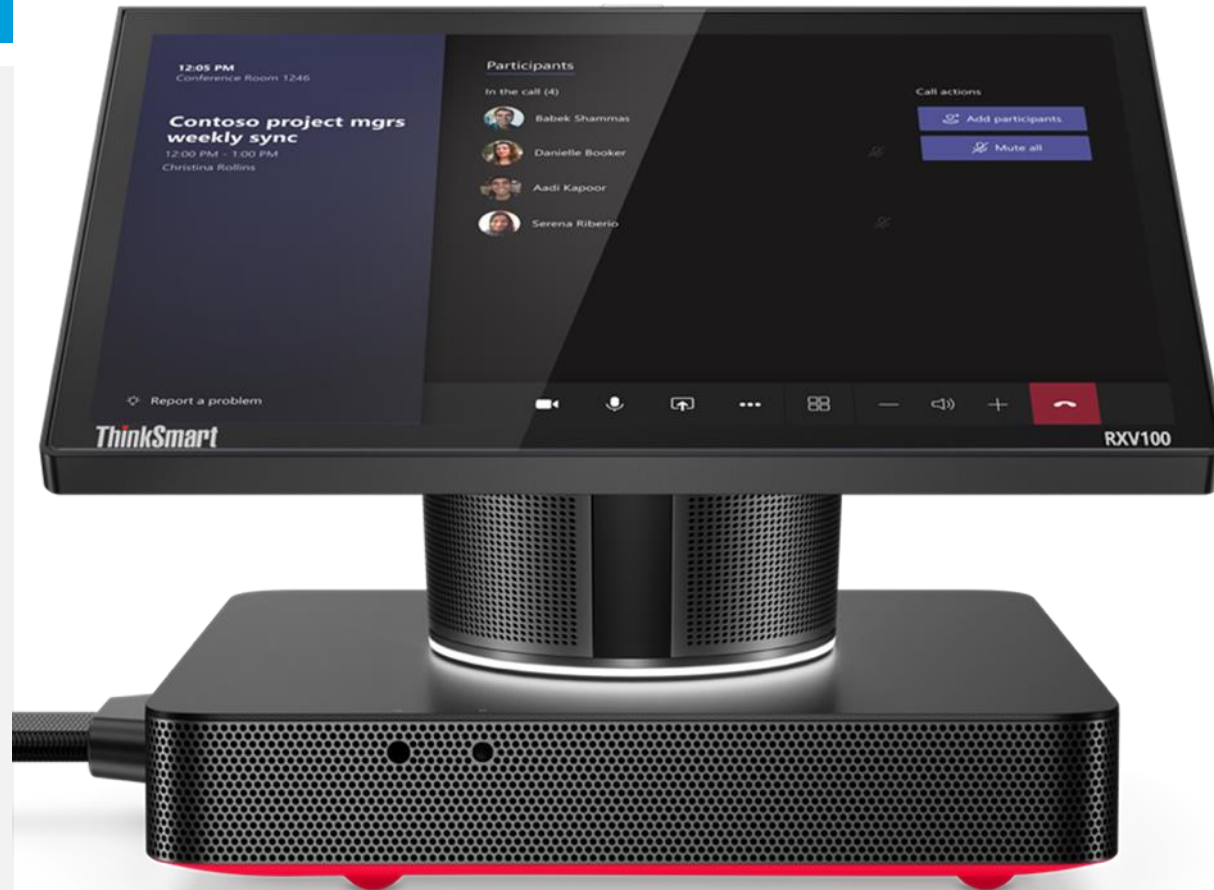
Superior video and audio quality that turns only large space into a smart meeting room

- Exceptional 1080p Ultra-HD video support
- Excellent audio quality
- Certified for Microsoft Teams
- Complete lifecycle management

The RXV Suite is based on the Lenovo ThinkSmart Hub, with an integrated audio device:

- 4x premium-tuned speakers
- 4x omnidirectional mics for 360 coverage
- Touch control 10.1" touch screen

AT&T Cloud Voice | AudioCodes Room Experience Hub



RXV81 Edge Value

A standalone MTR video bar with integrated A/V designed to work with any monitor in huddle rooms and small shared rooms, as well as in managers' and executives' personal offices

MTR and BYOD

Android 12

Great price

Fully managed

Special RX-PAD design

The ideal option for your huddle space or small room

AT&T Cloud Voice | Video and audio room controllers

Teams-RXV81 – ideal for private office

Use the remote for adding another large device (RX-PAD_ to your desk

- RXV81 main unit
- Smart BT remote controller



RXV81 RC



RXV81 MTR

Teams-RXV81-B10

Dedicated room controllers improve the user experience in shared rooms

- RXV81 main unit
- RX-PAD

RX-PAD



RXV81 MTR

RX40 Audio Bar

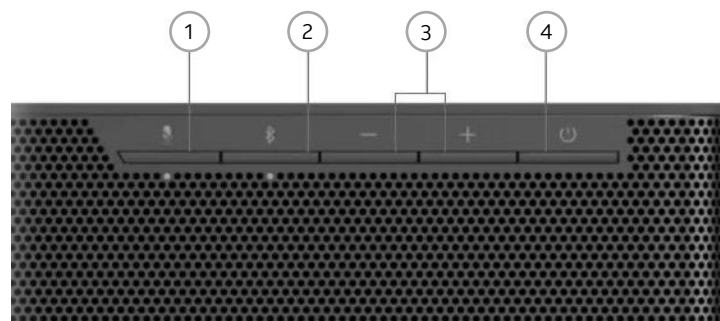
The RX40 Audio Bar is an intelligent USB-powered external speaker with two satellite microphones. It delivers superior performance for medium to large rooms.

For medium to large meeting rooms

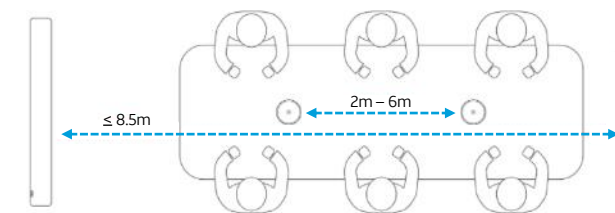
- Audio sound bar (peripheral USB audio)
 - Loudspeaker (up to 100db)
 - 2 full duplex satellite microphones installed on the table for super voice pickup
 - Mute button with back light on each microphone
 - RX40 covers medium to large rooms up to 8.5 x 4.5 meters in size
- RX40 Audio Bar is bundled with the RXV100 Windows MTR and the RXV200 Android MTR



AT&T Cloud Voice | Audio bar



- | | | | |
|---|--------------------|---|----------------|
| 1 | Mute | 3 | Volume down/up |
| 2 | Bluetooth® pairing | 4 | Power-on |



RXV80 Video Bar

The stylish exterior and fast setup are specifically designed for huddle rooms and small shared rooms, as well as for managers' and executives' personal offices

- Participants 5-6 (2 options)
- Room depth: 3m
- Video features: Full HD with 110° field of view, electronic pan, tilt, and zoom (EPTZ)
- Built-in integrated 4 mics with 4.5m pickup for mid-size rooms
- Bluetooth remote control
- Supports a touchscreen or non-touchscreen display (not included)

Optional audio device: RX15

- Option 1 | below TV
- Option 2 | on table (requires cable extender)

AT&T Cloud Voice | video bar



RXV Cam50L/M

Powerful video cameras with excellent image clarity designed for any sized meeting room or conference room

- Vivid image quality
- 4K resolution for an exceptional video conferencing experience
- Smart zoom and face detection technology
- Auto framing feature to automatically adjust the camera's electronic pan, tilt, and zoom (EPTZ) so that every meeting participant can be clearly seen
- **Two models to fit your specific needs:**
 - RXV Cam50L (for large meeting rooms with a narrow field of view)
 - RXV Cam50M (for small to medium rooms with a wide field of view)

AT&T Cloud Voice | Powerful video camera for large rooms



RXCam10 Personal camera

Exceptional quality for productive workplace collaboration



AT&T Cloud Voice | Video camera for personal use



Superb image quality

Suitable for all lighting conditions

1080p Full HD video at 30fps
Full HD PoE

3x digital zoom and
privacy shutter

AT&T Cloud Voice | AudioCodes recommended Microsoft Teams Rooms (MTR) solution sizing

Large meeting room

Up to 16 Seats



RXV100-B42



RXV200-B40

Mid-sized meeting room

Up to 10 Seats



RXV100-B20

Also available as RXV100-B05 (audio only)



RXV200-B20

Focus or huddle room

Up to 6 Seats



RXV81-B10

Manager's office



RXV81
standalone

AT&T Cloud Voice | AudioCodes MTR benefits (Windows and Android operating systems support)



- Most powerful hardware (Intel-based)
- Built-in security and automatic Windows updates
- Long lifecycle in terms of hardware and software refresh time
- Microsoft Teams built in
- New features are introduced first on Windows and also now supported on Android operating systems



- Reliable hardware
- Cost-effective and good value
- Simpler deployment and management
- Ability to swap between environments – an unlocked device
- Less power consumption

AT&T Cloud Voice | AudioCodes RXV100 room bundles



RXV100-B05 Bundle

Fits small to mid-size rooms

- RXV100 for Microsoft Teams
- Hub only
- Suitable for audio-only rooms



RXV100-B20 Bundle

Fits small to midsize rooms

- RXV100 for Microsoft Teams
- RXVcam50M



RXV100-B40 Bundle

Fits medium to large rooms

- RXV100 for Microsoft Teams
- RXVcam50L
- RX50 as an audio peripheral



RXV100-B40 Bundle + ACC mics

Fits medium to large rooms

- RXV100 for Microsoft Teams
- RXVcam50L
- RX50 as an audio peripheral
- Satellite microphones



AT&T Cloud Voice | HP/POLY Room devices conferencing units



Ideal for

Small rooms that need a premium all-in-one video bar



POLY Studio X30

- Cloud video apps such as Zoom and Microsoft Teams built right in – no PC or Mac required
- Poly DirectorAI smart camera technology with pinpoint-accurate automatic framing and tracking
- 4K Ultra HD camera with 121° DFOV, 110° HFOV
- Block out audio distractions with Acoustic Fence and NoiseBlockAI technologies
- Wi-Fi connectivity for content sharing and device management
- Tripod-ready design and optional wall and VESA mounts

Ideal for

Small rooms that need an easy-to-use USB video bar



POLY Studio R30

- Simple USB connection to a PC or Mac to use with any video app or cloud service
- Poly DirectorAI smart camera technology with pinpoint-accurate automatic framing and tracking
- 4K Ultra HD camera with 120° DFOV, 110° HFOV
- Block out audio distractions with Acoustic Fence and NoiseBlockAI technologies
- Wi-Fi connectivity for content sharing and device management
- Tripod-ready design and optional wall and VESA mounts

Ideal for

Small rooms that need a PC-based Microsoft Teams system



POLY Studio Small Room Kit for Microsoft Teams Rooms

- Poly DirectorAI smart camera technology with pinpoint-accurate automatic framing and tracking
- 4K Ultra HD camera with 120° DFOV, 110° HFOV
- Block out audio distractions with Acoustic Fence and NoiseBlockAI technologies
- 8-inch touch console with HDMI and USB port for content sharing
- Includes Poly Studio R30, GC8 touch controller, and 10m USB cable
- Available with powerful HP Mini Conferencing PC with Windows IoT and Intel® Core™ i7

AT&T Cloud Voice | HP/POLY Room devices conferencing units



Ideal for

Medium rooms that need to connect to multiple video conferencing platforms over USB



POLY Studio

- Simple USB connections to a PC or Mac to use with any video app or cloud service
- PolyDirectorAI smart camera technology with pinpoint-accurate automatic framing and tracking
- 4K Ultra HD camera with 121° DFOV, 110° HFOV
- Advanced microphone array covering up to 15 ft and stereo speakers
- Wi-Fi connectivity for content sharing and device management
- Optional expansion microphone extends pickup range to 18 ft

Ideal for

Medium rooms that need a premium all-in-one video bar



POLY Studio X50

- Cloud video apps such as Zoom and Microsoft Teams build right in – no PC or Mac required
- Poly DirectorAI smart camera technology with pinpoint-accurate automatic framing and tracking
- 4K Ultra HD camera with 121° DFOV, 110° HFOV
- Block out audio distractions with Acoustic Fence and NoiseBlockAI technologies
- Wi-Fi connectivity for content sharing and device management
- Dual display support to see people and content in full size

Ideal for

Medium rooms that need a PC-based Microsoft Teams system



POLY Studio Small Room Kit for Microsoft Teams Rooms

- Poly DirectorAI smart camera technology with pinpoint-accurate automatic framing and tracking
- 4K Ultra HD camera with 120° DFOV, 110° HFOV
- Multi-mic array and stereo speakers block out audio distractions with Acoustic Fence and NoiseBlockAI technologies
- 8-inch touch console with HDMI and USB port for content sharing
- Includes Poly Studio R30, GC8 touch controller, and 10m USB cable
- Powerful Poly signature audio covering up to 15 ft/3.6 m mic pickup range with optional extension mic support
- Available with powerful HP Mini Conferencing PC with Windows IoT and Intel® Core™ i7

AT&T Cloud Voice | HP/POLY Room devices conferencing units



Ideal for

Large conference rooms that need a premium all-in-one video bar



POLY Studio X70



- Cloud video apps such as Zoom and Microsoft Teams built right in – no PC or Mac required
- Poly DirectorAI smart camera technology with pinpoint-accurate automatic framing and tracking
- Dual cameras with 4K Ultra HD sensors
- Poly NoiseBlockAI and Acoustic Fence technologies keep out audio distractions
- Wi-Fi connectivity for content sharing and device management
- Two-way stereo speakers, aluminum cone tweeters, and advanced bass ports

Ideal for

Medium to large rooms that need a custom designed video conferencing solution



POLY G7500



- Native support for cloud video platforms – no PC or Mac required
- Poly DirectorAI smart camera technology with pinpoint-accurate automatic framing and tracking
- Dual cameras with 4K Ultra HD sensors
- Poly NoiseBlockAI and Acoustic Fence technologies keep out audio distractions
- Wi-Fi connectivity for content sharing and device management
- Includes G7500 codec, Studio E70 camera, TC8 touch controller, and IP microphone

Ideal for

Medium to large rooms that need a PC-based Microsoft Teams system



POLY Studio Large Room Kit for Microsoft Teams Rooms



- Poly DirectorAI smart camera technology with pinpoint-accurate automatic framing and tracking
- Dual cameras with 4K Ultra HD sensors
- 8-inch touch console with HDMI and USB port for content sharing
- Includes Poly Studio R70, GC8 touch controller, and 10m USB cable
- Available with powerful HP Mini Conferencing PC with Windows IoT and Intel® Core™ i7



AT&T Business