

## PRODUCT BRIEF

# AT&T Private Line Service

Efficient, Cost-Effective, Secure, Dedicated Communications

Your business is growing to multiple sites within the U.S. or even internationally. That means you need reliable communications between these sites. Private Line Services allow you to connect your enterprise network directly to one site or multiple sites, depending on the needs of your applications and locations. AT&T provides data, video and voice transmission services that are faster and more efficient, with the diversity to protect your network assets.

AT&T Private Line Service lets you connect your locations with safe, efficient and reliable communications at high speeds using AT&T's network. Utilizing AT&T's service portfolio brings availability, reliability, network management and support to allow you to customize your network.

### Customizing Your Network

#### Service Types

We have the broadest array of best-in-class Private Line Services from 9.6 Kbps (single channel) to 10G Wavelength services. We also offer the industry leading Optical Mesh Service as well as Ethernet solutions.

#### Availability

AT&T Private Line Service is available domestically and in 80 countries around the globe. To ensure we can meet your future needs, we are constantly expanding and improving our network. With more than 77,000 route miles of fiber optics, including 18,000 miles of new "next-generation" fiber and SONET rings, we have created an ultra-capacity express overlay network with state-of-the-art SONET and optical networking technologies. This architecture ensures extensive coverage for your current and expanding needs.

#### Reliability

AT&T's superior network technology and state-of-the-art infrastructure positions AT&T Private Line as the ultimate in reliability. The AT&T network utilizes multiple restoration capabilities via Mesh architecture, SONET Rings and FASTAR. Our SONET Premium Private Line Services offer redundant circuits and millisecond restoration times – so fast that restoration is virtually unnoticeable.

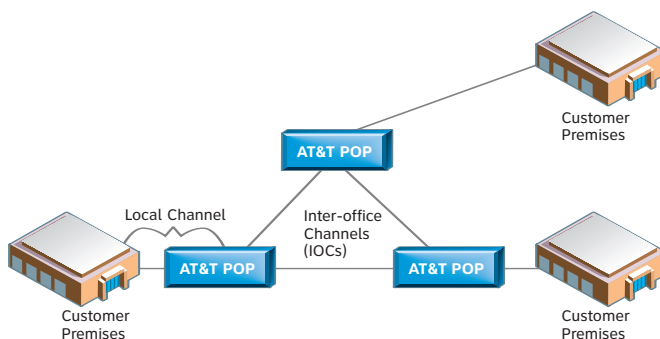
### BENEFITS

- Performance – Dedicated, private and secure point-to-point connectivity that allows you to connect to multiple end-points
- Agility – End-to-end component and network management
- Control – Total Service – One number to call for Private Line Service
- Line end-to-end provisioning, maintenance, billing and support
- Security – AT&T is one of the most dependable communication providers in the industry offering 24x7 proactive monitoring of your network

### FEATURES

- Configures private lines over physically diverse POP to POP routes if required
- Uses self-healing SONET Network to route customer traffic
- SLAs that provide credits in the rare event of a service interruption
- Premium Services with Enhanced SLAs
- Multiple types of configurations – Point to Point, Multipoint and Add/Drop Multiplexer
- Cost-effective and scalable speeds up to 9.9 Gbps (OC192)

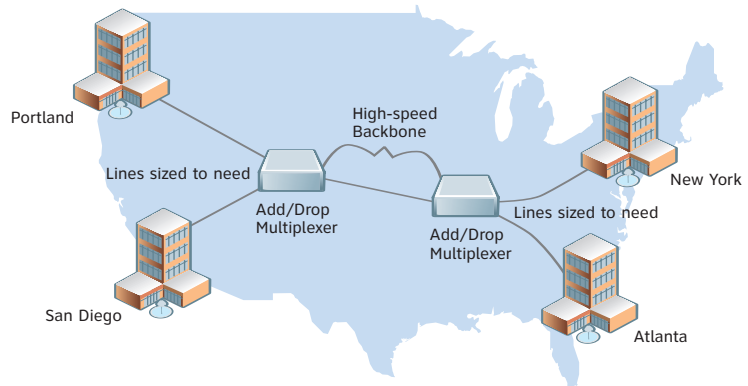
## AT&T Private Line Service – Multipoint



### Network Management and Support

Our Private Line and SONET maintenance centers are available to customers 24 hours a day. Our customers can choose to outsource network management; we offer a variety of options. We also have special service options for the customer who wants hands-on control over their network. With AT&T, customers can choose exactly how much management and support they want and need.

### AT&T Private Line Service – Multiplexed



### Private Line Application Set

Business Need	Application	SC	T1	T3	Wavelength & SONET Service	Optical Mesh Service
Supply-Chain Management: Lower costs by managing assets and resources	Inventory tracking	●		●	●	●
	Order tracking	●			●	●
	Point of sale	●	●		●	●
	Shipment tracking	●			●	●
	Electronic Data Interchange				●	●
Information Sharing: Maintain a competitive edge by ensuring that employees have access to timely information and can work together to implement corporate goals	Hoot 'n' Hollers	●				
	Automatic Ring Down	●				
	Videoconferencing			●	●	●
	CAD-CAM			●	●	●
	CAD-CAM-CAE			●	●	●
Connectivity: Increase productivity by enabling workgroup communication	Bulk File Transfer	●	●	●	●	●
	Host-to-Host Connectivity		●	●	●	●
	ISP Interconnectivity and Hosting		●	●	●	●
	LAN Interconnection	●	●	●	●	●
	High volume voice, video, data			●	●	●
	Network Consolidation			●	●	●
	Bulk voice, data and video to multiple locations				●	●
Imaging: Overcome the challenges of sharing large, graphic-intensive files	Imaging			●	●	●
	Teleradiology			●	●	●
Automation: Increase efficiency by simplifying processes and automating tasks	Automatic Teller Machines	●			●	●
	Remote telemetry					
	Bulk file transfer & mirroring					
Enhanced Customer Service: Retain customers by employing personalized customer service strategies	Customer Info Systems				●	●
Distance Learning: Overcome the challenges of a dispersed and/or mobile workforce	Distance Learning/ Remote Consultation		●	●	●	●
Media Distribution: Deliver Broadcast Video/ Content Storage/Streaming Video	Distribution of various forms of media				●	●
Broadcast Support: Deliver Managed/ Monitored Broadcast Video	Full-time or occasional use/ news/sports/special events			●	●	●
Do It Yourself (DIY) Networking: Customers desire to build their own Corporate Utility Network	Customer looking to build their own backbone infrastructure				●	●

For more information contact your AT&T Representative or visit us at [www.att.com/business](http://www.att.com/business).

