

PRODUCT BRIEF

AT&T Ultravailable[®] Network Service

Availability, Flexibility, Reliability and Control

It is more important than ever to have a responsive, easy to manage and secure network that is engineered to meet your unique business requirements. AT&T Ultravailable Network Service gives you maximum flexibility in bandwidth design and allows you to run your entire business across a highly available, private, secure and flexible infrastructure that can accommodate multiple applications and protocols. This private network infrastructure is fully managed allowing you to focus on more important things... your business.

Designed to Meet Your Networking Needs

Are you operating multiple locations in a metropolitan area? Do you have several different network applications and want a secure network to deploy them on? AT&T's Ultravailable Network Service can answer your

needs by providing a single network that can carry all your traffic regardless of protocol.

AT&T Ultravailable Network Service (UVN) is a classic solution for Call Center Management, Data Center Management, Storage Area Networking, Replication/Storage, SAN extension, Network Consolidation, Healthcare application, Security Solutions, access to and consolidation of existing services, transport circuit aggregation, reliable Ethernet transport, and the need for flexible, growing, or high bandwidth. With the security and versatility UVN offers, it may be the only network you need.

These rings have access to AT&T's extensive nationwide fiber footprint in addition to access to third-party fiber providers, which allows you to connect your network across multiple Metropolitan Areas and even across the country, wherever your business locations are.

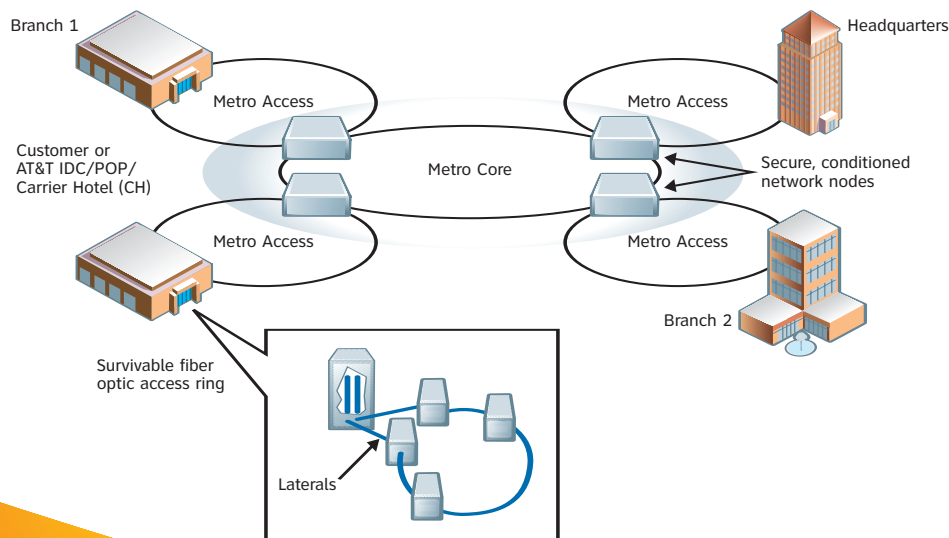
BENEFITS

- Agility – Rapid provisioning to scale your ring to virtually unlimited bandwidth
- Reliability – 24 hours a day 7 days a week network monitoring options and management tools to ensure that your network performs at its optimum level so that you can focus on your core business
- Flexibility – Your integrated ring solutions employing SONET, DWDM, Storage and Ethernet technologies offer flexibility and ease of application integration

FEATURES

- UVN Battery Backup Service (UVN BBU)
- Extended Demarcation
- Network Visibility with AT&T BusinessDirect[®]

Ultravailable[®] Network Service Rings



AT&T works with you to understand your networking needs and offers Ultravailable Network with options so that you can design the network that will work for you now and in the future.

Ultravailable® Network Service Rings

UVN takes advantage of both SONET (Synchronous Optical Network) and DWDM (Dense Wave Division Multiplexing) technologies to deliver service on a single dedicated ring platform. You can easily integrate SONET and DWDM applications onto a seamless integrated ring for maximum efficiency and long-term growth capability; therefore, your network is ready to expand as your business needs do.

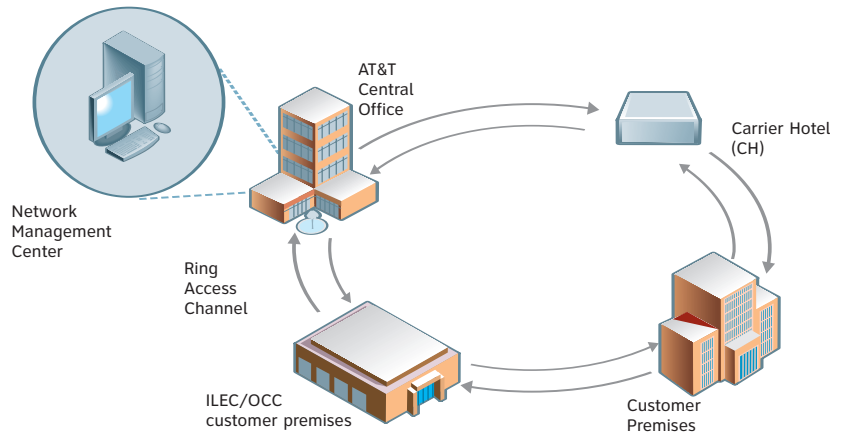
Integrated Rings with SONET/DWDM are a good choice for you when your business requires the ability to support multiple applications utilizing various protocols. For example, you may have data needs requiring large amounts of bandwidth along with voice and video applications. SONET can carry your voice, video and data but if you also need a secure storage network that uses a different protocol than SONET or want the ability to compress or segment your traffic in other ways, AT&T's integrated rings provide a network solution for everything you need because they allow you to run applications that use both SONET and DWDM all on the same network. UVN is your solution for a single dedicated network that can handle all of your traffic in a secure environment.

UVN rings can grow with you by giving you the option to build your ring as just SONET at first with room to grow into more bandwidth and protocols as well as the option to utilize existing fiber in some cases.

Ultravailable® Service Option 2 (UV2)

UV2 is a service option that allows you to deploy traditional SONET (Synchronous Optical Network) solutions and easily upgrade to a fully integrated DWDM (Dense Wave Division Multiplexed) ring in the future. Service Option 2 allows you to pay as you go, giving you a highly secure and advanced network but not committing you to paying

Ultravailable® Service Option 2 (UV2)



for more than you need before you need it. This service is designed to meet all of the traditional requirements of SONET networks with the added flexibility to transport wavelength services (Storage, Ethernet) and native protocols such as FICON and Fiber Channel. Our Ultravailable platform offers a "future-proof" infrastructure for growth and additional wavelengths, as well as easy migration from lower speeds to higher speeds.

Ultravailable® Service Option 3 (UV3)

UV3 is a service option designed to meet your needs when you already have fiber assets or have a privately owned optical network in place and want the advantages of the Ultravailable platform.

You can build a new network using your own fiber and have AT&T provide the Optical Network Ring Design, Equipment Procurement and Maintenance, Installation

and Integration. UV3 allows you to have AT&T manage your network, allowing you to free up those resources to concentrate on other critical areas of your business.

Available Where You Need It

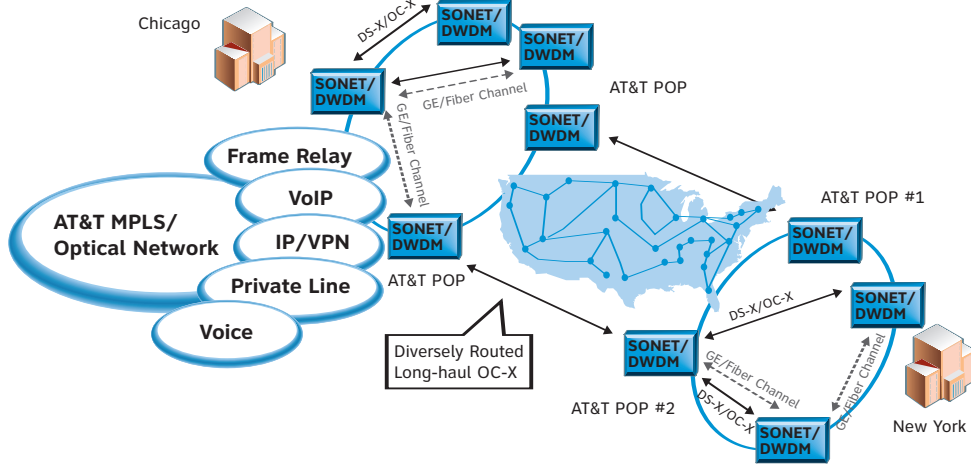
AT&T Ultravailable Networks are customized to your individual needs. UVN can interconnect with Long Haul Core Wavelengths to connect your ring into a larger network while maintaining the resilience, reporting and convenience you expect.

Because UVN can accept so many protocols, there are several options of services that you can connect to including Ethernet, Frame Relay, ATM, Private Line and SONET or Wave based services for a larger bandwidth.

You can use UVN as part of your National Network while using the features of UVN to help ensure that wherever your traffic is coming from or going to, it is secure.

UV3 Service Options	Client Provided	AT&T Provided
Fiber Procurement and Maintenance	●	
Equipment Procurement	●	●
Equipment Maintenance	●	●
Network Design	Existing networks	New networks
Installation and Integration	Existing networks	New networks
Proactive Monitoring and Management		●

Ultravailable Networks Connected Nationwide



Additional UVN Features

UVN can be designed to include the following additional features.

UVN Battery Backup Service (UVN BBU)

You can have a more comprehensive managed service by providing an additional level of power diversity and protection which will assist you in mitigating potential ring failures due to commercial power outages, brown-outs, etc. Based on your requirements and the UVN design, AT&T will custom engineer and install either a 4 or 8 hour battery back-up power source at the locations you choose and provide both preventative and proactive maintenance. UVN BBU is automatically and immediately enabled when your building's DC power becomes unavailable so that even when your power is out, your network is running.

Extended Demarcation

You can extend the UVN demarcation patch panel, which is normally co-located with the UVN equipment, to another location which can be on the same floor or even another floor. AT&T will engineer, install, and maintain an "Extended Demarcations" patch panel and associated cables. This allows you to put your vital equipment and connections to be where you need them, whether you want a separate location for security or convenience.

Network Visibility with AT&T BusinessDirect®

UVN allows you visibility into your network through AT&T's BusinessDirect® Web portal. You can have access to inventory, alarm and performance information, taking the guesswork out of your network management.

AT&T BusinessDirect® Portal and AT&T iGEMS™ Integrated Global Management System

- Provide visibility into the health of your networking infrastructure giving you access to real-time alarms and historical performance data that you can share with stakeholders
- Supports compliance mandates with SLA and performance data
- Provide proactive power level trending to avoid potentially service affecting issues

Benefits

Agility

Rapid provisioning to scale your ring to virtually unlimited bandwidth.

- Quickly respond to unpredictable network demands
- Grow your network as business application require
- Add or change applications as your business needs dictate
- Choose the connectivity options your business requires
- You are in charge of your network at all times

Reliability

24 hours a day 7 days a week network monitoring options and management tools to help ensure that your network performs at its optimum level so that you can focus on your core business.

- You have access to technical support, a life cycle manager as well as business manager. This team is in place to assist you with network analysis, new service provisioning development of strategic plans as well as billing support who will work with you for the duration of your contract
- Your network gets Service Assurance Testing to help ensure that your UVN is fully operational now and ready to rapidly make any changes you might want in the future
- Testing activities include: fiber characterization, ring, wavelength, and channel testing, mapping verification, alarm reconciliation, verification of proper timing/synchronization for each SONET ADM node
- You will get a full report of your UVN performance



Flexibility

Your integrated ring solutions employing SONET, DWDM, Storage and Ethernet technologies offer flexibility and ease of application integration, and supports multiple applications:

- Business continuity and recovery
- Virtualization, replication/storage
- SAN extension, data center connectivity
- SIP Trunking, Telepathology, IP/Video and more

Performance

High performing infrastructure allowing easy and secure transmission of your large data files among your various locations with high reliability.

- Connects sites in a Metropolitan Area Network (MAN) environment
- Transports multiple data signals and protocols over a single fully managed and maintained network
 - Specifically designed to meet your current and future requirements
 - Technical Support and Lifecycle Management

AT&T Ultravailable® Network Service

- Fully Managed Dedicated customer rings
- Multiple Protocol support
 - Supported protocols include Native IT (Fast Ethernet, FDDI, ESCON, FICON, Fibre Channel, Gigabit Ethernet, 10

Gigabit Ethernet); DS-1/DS-3; SONET (OC-3, OC-12, OC-48, and OC-192) bandwidths; D1 video; ISC, and ETR

- Available throughout metropolitan areas in the United States
 - Subject to ring mileage limitations
- Dedicated network AT&T POPs, AT&T LNS Service Centers, Co-location facilities, Carrier Hotels, etc.
- ILEC POP (as required)

AT&T Ultravailable® Network Service Options

Type	Description	Speeds	Additional Information
AT&T Ultravailable® Network	Dedicated, fully managed, integrated SONET/DWDM optical network	Up to 44 protected channels: <ul style="list-style-type: none"> • SONET (DSx/OCx) • Fiber Channel • FICON • Ethernet (10 Mb – 10 GE LAN/WAN PHY) 	Provides a custom, fully managed fiber optic metro area network (MAN), designed to the customer’s specifications for their exclusive use. Deployable on AT&T provided, or 3rd party provided fiber managed by AT&T.
Ultravailable® Service Option 2 (UV2)	Fully managed, dedicated SONET solution built on the UVN platform making it easily scalable to DWDM	Up to 2 protected channels: <ul style="list-style-type: none"> • SONET (DSx/OCx) • Fiber Channel • FICON • Ethernet (10 Mb – 10 GE LAN/WAN PHY) 	SONET solution deployed on UVN platform to facilitate the transport of native protocols and growth to DWDM. Deployable on AT&T provided, or 3rd party provided fiber managed by AT&T.
Ultravailable® Service Option 3 (UV3)	Fully managed, Ultravailable solution on client provided fiber	Up to 44 protected channels: <ul style="list-style-type: none"> • SONET (DSx/OCx) • Fiber Channel • FICON • Ethernet (10 Mb – 10 GE LAN/WAN PHY) 	UV3 solution delivered on “Client provided and maintained fiber”. UV3 includes the options of either new network implementation and/or taking over monitoring and management of existing Customer networks provided they are manageable by the Ultravailable® Maintenance Center (UMC).

For more information contact your AT&T Representative or visit us at www.att.com/business AT&T Ultravailable® Network Service Overview.

